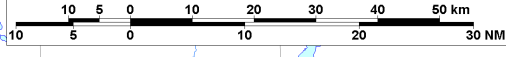
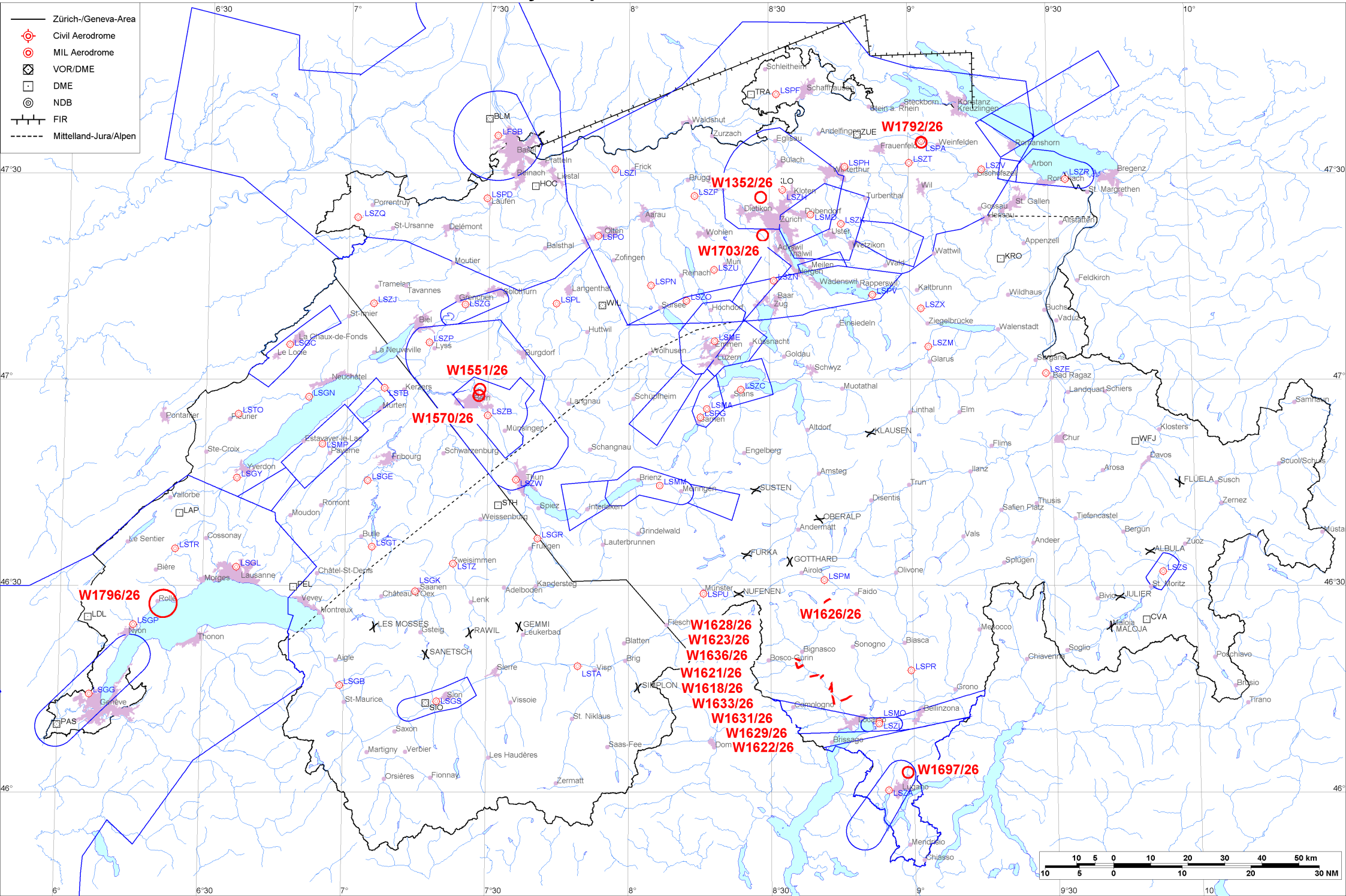


- Zürich-/Geneva-Area
- ⊙ Civil Aerodrome
- ⊙ MIL Aerodrome
- ⊠ VOR/DME
- DME
- ⊙ NDB
- FIR
- - - - - Mittelland-Jura/Alpen





Firings / AIP-Areas / Warnings:

Firing-Nr AIP-Area NOTAM-Nr	Validity UTC	Lower Limit (m/ft AMSL or FL)	Upper Limit (m/ft AMSL or FL)	Center Point	Covering Radius	NOTAM Item E
W1352/26	0400 - 1800	GND	600m / 1950ft	472626N 0082814E	0.3KM / 0.2NM	UNMANNED DRONE BEYOND VISUAL LINE OF SIGHT OPERATIONS WILL TAKE PLACE AT AND BELOW 500FT AGL IN REGENSDORF, 6.2KM WSW LSZH AD, RADIUS 0.2KM (472626N0082814E RADIUS 0.2NM). FOR INFORMATION CTC +41 79 124 10 48 AND REFER TO WWW.MAP.GEO.ADMIN.CH TOPIC AVIATION UAS AWARENESS MAP.
W1551/26	0000 - 2359	GND	700m / 2250ft	465831N 0072815E	0.3KM / 0.2NM	UNMANNED DRONE BEYOND VISUAL LINE OF SIGHT (BVLOS) WILL TAKE PLACE 7.2KM NNW LSZB, RADIUS 0.2KM (465831N0072815E RADIUS 0.2NM). FOR INFO CTC TEL +41 800 817 620 AND REFER TO WWW.MAP.GEO.ADMIN.CH TOPIC AVIATION UAS AWARENESS MAP.
W1570/26	0000 - 2359	GND	600m / 2000ft	465737N 0072802E	0.5KM / 0.3NM	UNMANNED DRONE BEYOND VISUAL LINE OF SIGHT (BVLOS) WILL TAKE PLACE 5.8 KM NNW LSZB, RADIUS 0.4KM (465737N0072802E RADIUS 0.3NM). FOR INFO CTC TEL +41 800 817 620 AND REFER TO WWW.MAP.GEO.ADMIN.CH TOPIC AVIATION UAS AWARENESS MAP.
W1618/26	0500 - 2200	GND	1050m / 3450ft	461646N 0084046E	0.5KM / 0.3NM	UNMANNED DRONE BEYOND VISUAL LINE OF SIGHT (BVLOS) WILL TAKE PLACE SE SOMEO ALONG TRACK 461637N0084031E 461639N0084031E 461655N0084057E 461657N0084059E 461656N0084102E 461653N0084100E 461637N0084034E 461637N0084031E (461646N0084046E RADIUS 0.3NM) AT AND BELOW 98FT/AGL (30M/AGL). FOR INFO CONTACT TEL +41 79 128 01 38 AND REFER TO WWW.MAP.GEO.ADMIN.CH TOPIC AVIATION UAS AWARENESS MAP.
! W1621/26	0500 - 2200	GND	1100m / 3550ft	461651N 0083902E	1.0KM / 0.6NM	UNMANNED DRONE BEYOND VISUAL LINE OF SIGHT (BVLOS) WILL TAKE PLACE S SOMEO AND AL CROISC ALONG TRACK 461657N0083945E 461656N0083944E 461648N0083848E 461643N0083821E 461644N0083818E 461645N0083820E 461651N0083847E 461659N0083943E 461657N0083945E (461651N0083902E RADIUS 0.6NM) AT AND BELOW 98FT/AGL (30M/AGL). FOR INFO CONTACT TEL +41 79 128 01 38 AND REFER TO WWW.MAP.GEO.ADMIN.CH TOPIC AVIATION UAS AWARENESS MAP.
W1622/26	0500 - 2200	GND	1050m / 3500ft	461319N 0084305E	1.0KM / 0.6NM	UNMANNED DRONE BEYOND VISUAL LINE OF SIGHT (BVLOS) WILL TAKE PLACE S MAGGIA ALONG TRACK 461350N0084255E 461350N0084258E 461337N0084306E 461249N0084317E 461248N0084316E 461248N0084313E 461337N0084302E 461349N0084254E 461350N0084255E (461319N0084305E RADIUS 0.6NM) AT AND BELOW 98FT/AGL (30M/AGL). FOR INFO CONTACT TEL +41 79 128 01 38 AND REFER TO WWW.MAP.GEO.ADMIN.CH TOPIC AVIATION UAS AWARENESS MAP.
W1623/26	0500 - 2200	GND	1200m / 3900ft	461822N 0083528E	0.7KM / 0.4NM	UNMANNED DRONE BEYOND VISUAL LINE OF SIGHT (BVLOS) WILL TAKE PLACE WSW CEVIO ALONG TRACK 461842N0083517E 461843N0083520E 461842N0083522E 461803N0083540E 461802N0083539E 461801N0083536E 461802N0083535E 461840N0083516E 461842N0083517E (461822N0083528E RADIUS 0.4NM) AT AND BELOW 98FT/AGL (30M/AGL). FOR INFO CONTACT TEL +41 79 128 01 38 AND REFER TO WWW.MAP.GEO.ADMIN.CH TOPIC AVIATION UAS AWARENESS MAP.



Firing-Nr AIP-Area NOTAM-Nr	Validity UTC	Lower Limit (m/ft AMSL or FL)	Upper Limit (m/ft AMSL or FL)	Center Point	Covering Radius	NOTAM Item E
W1626/26	0500 - 2200	GND	2300m / 7650ft	462746N 0084154E	0.9KM / 0.5NM	UNMANNED DRONE BEYOND VISUAL LINE OF SIGHT (BVLOS) WILL TAKE PLACE NE FUSIO ALONG TRACK 462732N0084122E 462734N0084122E 462747N0084146E 462801N0084224E 462800N0084226E 462758N0084226E 462745N0084148E 462732N0084125E 462732N0084122E (462746N0084154E RADIUS 0.5NM) AT AND BELOW 98FT/AGL (30M/AGL). FOR INFO CONTACT TEL +41 79 128 01 38 AND REFER TO WWW.MAP.GEO.ADMIN.CH TOPIC AVIATION UAS AWARENESS MAP.
W1628/26	0500 - 2200	GND	1100m / 3650ft	461913N 0083543E	0.5KM / 0.3NM	UNMANNED DRONE BEYOND VISUAL LINE OF SIGHT (BVLOS) WILL TAKE PLACE WNW CEVIO ALONG TRACK 461907N0083605E 461906N0083602E 461914N0083525E 461918N0083521E 461920N0083524E 461917N0083527E 461909N0083604E 461907N0083605E (461913N0083543E RADIUS 0.3NM) AT AND BELOW 98FT/AGL (30M/AGL). FOR INFO CONTACT TEL +41 79 128 01 38 AND REFER TO WWW.MAP.GEO.ADMIN.CH TOPIC AVIATION UAS AWARENESS MAP.
! W1629/26	0500 - 2200	GND	1350m / 4450ft	461335N 0084543E	1.4KM / 0.8NM	UNMANNED DRONE BEYOND VISUAL LINE OF SIGHT (BVLOS) OPS WILL TAKE PLACE E GORDEVIO ALONG TRACK 461318N0084447E 461334N0084552E 461355N0084637E 461352N0084639E 461332N0084554E 461316N0084449E 461318N0084447E (461335N0084543E RADIUS 0.8NM) AT AND BELOW 95FT/AGL (29M/AGL). FOR INFO CTC TEL +41 79 128 01 38 AND REF TO WWW.MAP.GEO.ADMIN.CH TOPIC AVIATION UAS AWARENESS MAP.
W1631/26	0500 - 2200	GND	1050m / 3550ft	461508N 0084244E	1.2KM / 0.7NM	UNMANNED DRONE BEYOND VISUAL LINE OF SIGHT (BVLOS) WILL TAKE PLACE NNE MAGGIA ALONG TRACK 461432N0084241E 461434N0084241E 461438N0084248E 461543N0084242E 461545N0084245E 461543N0084246E 461437N0084252E 461432N0084244E 461432N0084241E (461508N0084244E RADIUS 0.7NM) AT AND BELOW 98FT/AGL (30M/AGL). FOR INFO CONTACT TEL +41 79 128 01 38 AND REFER TO WWW.MAP.GEO.ADMIN.CH TOPIC AVIATION UAS AWARENESS MAP.
W1633/26	0500 - 2200	GND	850m / 2850ft	461509N 0084228E	0.6KM / 0.3NM	UNMANNED DRONE BEYOND VISUAL LINE OF SIGHT (BVLOS) WILL TAKE PLACE N MAGGIA ALONG TRACK 461454N0084216E 461456N0084215E 461524N0084238E 461524N0084241E 461521N0084240E 461455N0084218E 461454N0084216E (461509N0084228E RADIUS 0.3NM) AT AND BELOW 98FT/AGL (30M/AGL). FOR INFO CONTACT TEL +41 79 128 01 38 AND REFER TO WWW.MAP.GEO.ADMIN.CH TOPIC AVIATION UAS AWARENESS MAP.
W1636/26	0500 - 2200	GND	1100m / 3650ft	461812N 0083612E	0.8KM / 0.5NM	UNMANNED DRONE BEYOND VISUAL LINE OF SIGHT (BVLOS) WILL TAKE PLACE S CEVIO ALONG TRACK 461823N0083644E 461822N0083643E 461759N0083545E 461759N0083543E 461801N0083542E 461803N0083543E 461826N0083640E 461826N0083642E 461823N0083644E (461812N0083612E RADIUS 0.5NM) AT AND BELOW 95FT/AGL (29M/AGL). FOR INFO CONTACT TEL +41 79 128 01 38 AND REFER TO WWW.MAP.GEO.ADMIN.CH TOPIC AVIATION UAS AWARENESS MAP.
W1697/26	0000 - 2359	GND	500m / 1600ft	460250N 0085839E	1.0KM / 0.5NM	UNMANNED DRONE BEYOND VISUAL LINE OF SIGHT (BVLOS) WILL TAKE PLACE NE OF THE CITY OF LUGANO, RADIUS 0.9KM (460250N0085839E RADIUS 0.5NM). BELOW 328FT/AGL (100M/AGL). FOR INFO CTC TEL +41 91 815 00 31 AND REFER TO WWW.MAP.GEO.ADMIN.CH TOPIC AVIATION UAS AWARENESS MAP.



Firing-Nr AIP-Area NOTAM-Nr	Validity UTC	Lower Limit (m/ft AMSL or FL)	Upper Limit (m/ft AMSL or FL)	Center Point	Covering Radius	NOTAM Item E
! W1703/26	0000 - 2359	GND	550m / 1850ft	472054N 0082837E	0.3KM / 0.2NM	UNMANNED DRONE BEYOND VISUAL LINE OF SIGHT (BVLOS) OPERATIONS WILL TAKE PLACE AT AND BELOW 66FT AGL OVER STALLIKON, 5.8KM SW ZURICH, RADIUS 0.2KM (472054N0082837E RADIUS 0.2NM). FOR INFORMATION CTC TEL +41 79 472 37 80 AND REFER TO WWW.MAP.GEO.ADMIN.CH TOPIC AVIATION UAS AWARENESS MAP.
W1792/26	2130 - 2359	GND	FL195	473426N 0090252E	0.3KM / 0.2NM	TEMPO R-AREA AMLIKON ESTABLISHED RADIUS 0.2KM (473426N0090252E RADIUS 0.2NM). WX MEASUREMENTS BY REMOTELY PILOTED AERIAL SYSTEM WILL TAKE PLACE. WHITE BLINKING PSN LGT WITH VISUAL RANGE OF AT LEAST 3KM. ENTRY PROHIBITED WHEN ACT EXC HEL EMERG MEDICAL SER (HEMS). FOR INFO ON ACT AND HEMS CTC TEL +41 79 772 93 32.
! W1796/26	1130 - 1700	GND	750m / 2500ft	462724N 0062145E	3.8KM / 2.0NM	D-AREA PERROY ESTABLISHED 1.9KM E ROLLE RADIUS 3.7KM (462724N0062145E RADIUS 2.0NM) DUE TO INTENSE SEAPLANE ACTIVITY OVER LAC LEMAN. WITHIN AIRSPACE G AND E ONLY. FOR INFO ON ACT AND COOR CTC 130.055.

Activities not shown on the DABS Chart Side:

NOTAM-Nr	Validity UTC	Lower Limit (m/ft AMSL or FL)	Upper Limit (m/ft AMSL or FL)	Center Point	Covering Radius	NOTAM Item E
W1743/26	0800 - 1400	GND	FL100	463306N 0072252E	9.3KM / 5.1NM	INTENSE GLD ACT WILL TAKE PLACE IN VCY OF ZWEISIMMEN AD, RADIUS 9.3KM (463306N0072252E RADIUS 5.0NM).

For detailed information regarding the DABS see AIP Switzerland GEN 3.1-5 or VFR GEN 1-0-4.

! New or changed data regarding an earlier version of the DABS.