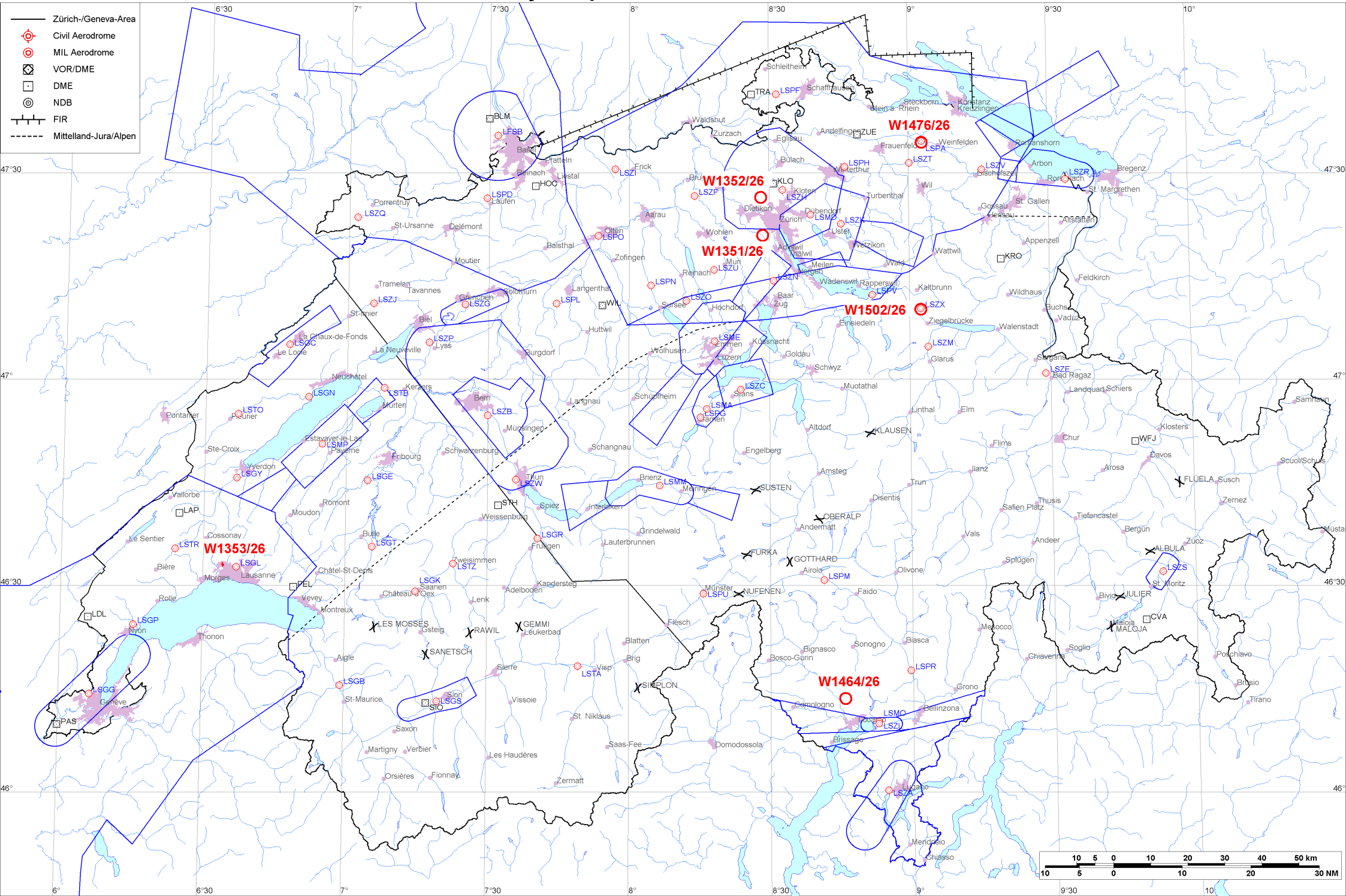


- Zürich-/Geneva-Area
- ⊕ Civil Aerodrome
- ⊙ MIL Aerodrome
- ⊠ VOR/DME
- DME
- ⊙ NDB
- FIR
- - - - - Mittelland-Jura/Alpen





Firings / AIP-Areas / Warnings:

Firing-Nr AIP-Area NOTAM-Nr	Validity UTC	Lower Limit (m/ft AMSL or FL)	Upper Limit (m/ft AMSL or FL)	Center Point	Covering Radius	NOTAM Item E
W1351/26	0000 - 2359	GND	550m / 1850ft	472054N 0082837E	0.3KM / 0.2NM	UNMANNED DRONE BEYOND VISUAL LINE OF SIGHT (BVLOS) OPERATIONS WILL TAKE PLACE AT AND BELOW 66FT AGL OVER STALLIKON, 5.8KM SW ZURICH, RADIUS 0.2KM (472054N0082837E RADIUS 0.2NM). FOR INFORMATION CTC TEL +41 79 472 37 80 AND REFER TO WWW.MAP.GEO.ADMIN.CH TOPIC AVIATION UAS AWARENESS MAP.
W1352/26	0400 - 1800	GND	600m / 1950ft	472626N 0082814E	0.3KM / 0.2NM	UNMANNED DRONE BEYOND VISUAL LINE OF SIGHT OPERATIONS WILL TAKE PLACE AT AND BELOW 500FT AGL IN REGENSDORF, 6.2KM WSW LSZH AD, RADIUS 0.2KM (472626N0082814E RADIUS 0.2NM). FOR INFORMATION CTC +41 79 124 10 48 AND REFER TO WWW.MAP.GEO.ADMIN.CH TOPIC AVIATION UAS AWARENESS MAP.
W1353/26	0337 - 1919	GND	500m / 1600ft	463259N 0063411E	0.1KM / 0.1NM	UNMANNED DRONE BEYOND VISUAL LINE OF SIGHT (BVLOS) OPERATIONS WILL TAKE PLACE AT AND BELOW 148FT AGL OVER MILLENNIUM BUILDING CRISSIER, 3.7KM W LSGE AD, 463302N0063410E 463302N0063409E 463302N0063409E 463301N0063409E 463256N0063411E 463300N0063415E 463302N0063410E (463259N0063411E RADIUS 0.1NM). FOR INFORMATION CTC TEL +41 84 410 53 30 AND REFER TO WWW.MAP.GEO.ADMIN.CH TOPIC AVIATION UAS AWARENESS MAP.
W1464/26	0500 - 2200	GND	1000m / 3300ft	461334N 0084542E	0.4KM / 0.2NM	UNMANNED ACFT ACT WILL TAKE PLACE 1.3KM ESE GORDEVIO, RADIUS 0.3KM (461334N0084542E RADIUS 0.2NM).
W1476/26	2130 - 2359	GND	FL195	473426N 0090252E	0.3KM / 0.2NM	TEMPO R-AREA AMLIKON ESTABLISHED RADIUS 0.2KM (473426N0090252E RADIUS 0.2NM). WX MEASUREMENTS BY REMOTELY PILOTED AERIAL SYSTEM WILL TAKE PLACE. WHITE BLINKING PSN LGT WITH VISUAL RANGE OF AT LEAST 3KM. ENTRY PROHIBITED WHEN ACT EXC HEL EMERG MEDICAL SER (HEMS). FOR INFO ON ACT AND HEMS CTC TEL +41 79 772 93 32.
W1502/26	2000 - 2359	GND	3400m / 11200ft	471010N 0090224E	0.6KM / 0.4NM	TEMPO D-AREA SCHANIS ESTABLISHED RADIUS 0.6KM (471010N0090224E RADIUS 0.4NM). WX MEASUREMENTS BY REMOTELY PILOTED AERIAL SYSTEM WILL TAKE PLACE. WHITE BLINKING POSITION LGT WITH VISUAL RANGE OF AT LEAST 3KM. FOR INFO ON ACT AND HEL EMERG MEDICAL SER (HEMS) CTC TEL +41 79 772 93 32.

Activities not shown on the DABS Chart Side:

NOTAM-Nr	Validity UTC	Lower Limit (m/ft AMSL or FL)	Upper Limit (m/ft AMSL or FL)	Center Point	Covering Radius	NOTAM Item E
W0019/26	0000 - 2359	FL130	FL150	464500N 0080800E	181.5KM / 98.1NM	MIL OFF: UPPER LIMIT AIRSPACE ECHO OVER ALPS FL150. REF VFR MANUAL GEN 1-0-5 PARAGRAPH 6.
W1421/26	0000 - 2359	GND	2450m / 8000ft	463009N 0085918E	0.6KM / 0.3NM	4.7 KM SE OLIVONE ADVISED NOT TO FLY BLW 8000 FT AMSL WI RADIUS 0.5KM (463009N0085918E RADIUS 0.3NM). DUE TO NESTING OF BIRDS OF PREY.
W1422/26	0000 - 2359	GND	2450m / 8000ft	463005N 0085938E	0.5KM / 0.3NM	5.2KM SE OLIVONE ADVISED NOT TO FLY BLW 8000 FT AMSL WI RADIUS 0.5KM (463005N0085938E RADIUS 0.3NM). DUE TO NESTING OF BIRDS OF PREY.



For detailed information regarding the DABS see AIP Switzerland GEN 3.1-5 or VFR GEN 1-0-4.