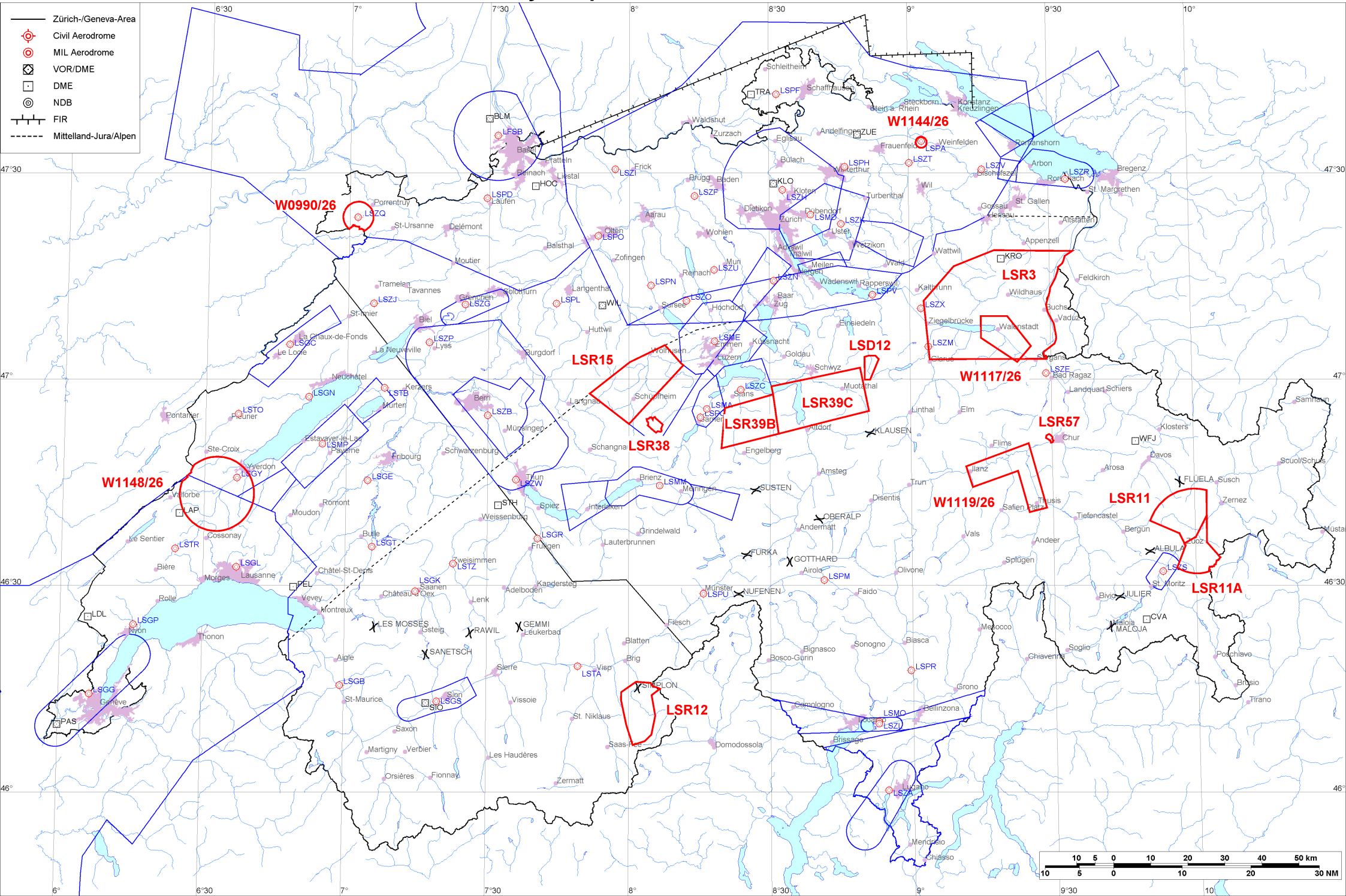


- Zürich-/Geneva-Area
- ⊙ Civil Aerodrome
- ⊙ MIL Aerodrome
- ⊠ VOR/DME
- DME
- ⊙ NDB
- FIR
- - - - - Mittelland-Jura/Alpen





Firings / AIP-Areas / Warnings:

Firing-Nr AIP-Area NOTAM-Nr	Validity UTC	Lower Limit (m/ft AMSL or FL)	Upper Limit (m/ft AMSL or FL)	Center Point	Covering Radius	NOTAM Item E
LSD12 W0314/26	0600 - 1000 1100 - 2100	GND	3000m / 9850ft	470140N 0085126E	3.6KM / 2.0NM	D-AREA LSD12 SIHLTAL ACT.
LSR3 W1215/26	0840 - 0920 1335 - 1415	FL100	FL130	471047N 0091932E	24.4KM / 13.2NM	R-AREA LSR3 SPEER ACT.
LSR11 W1147/26	0600 - 1500 1700 - 1900	GND	9600m / 31500ft	464054N 0095706E	8.9KM / 4.8NM	R-AREA LSR11 S-CHANF ACT.
LSR11A W1214/26	0600 - 1500 1700 - 1900	2150m / 7000ft	9600m / 31500ft	463605N 0095959E	8.3KM / 4.5NM	R-AREA LSR11A S-CHANF ACT.
LSR12 W1200/26	0700 - 2000	GND	6850m / 22500ft	461121N 0080238E	8.7KM / 4.7NM	R-AREA LSR12 SIMPLON ACT DUE TO FRNG.
LSR15 W1207/26	0645 - 0915 1130 - 1500 1600 - 2000	1700m / 5500ft	FL100	465958N 0080137E	13.3KM / 7.2NM	R-AREA LSR15 ENTLEBUCH ACT.
LSR38 W1181/26	0600 - 2000	GND	2300m / 7500ft	465317N 0080519E	2.6KM / 1.4NM	R-AREA LSR38 GLAUBENBERG-WASSERFALLEN ACT DUE TO FRNG.
LSR39B W1208/26	0700 - 0900 1200 - 1400	2750m / 9000ft	FL130	465352N 0082513E	10.1KM / 5.5NM	R-AREA LSR39B BRISEN ACT. LOWER LIMIT 9000FT AMSL OR 2000FT GND WHICHEVER IS HIGHER.
LSR39C W1209/26	0700 - 0900 1200 - 1400	2750m / 9000ft	FL130	465652N 0084033E	14.2KM / 7.7NM	R-AREA LSR39C STOOS ACT. LOWER LIMIT 9000FT AMSL OR 2000FT GND WHICHEVER IS HIGHER.
LSR57 W1115/26	0600 - 1000 1100 - 2000	GND	2000m / 6500ft	465122N 0092930E	1.3KM / 0.7NM	R-AREA LSR57 ROSSBODEN-RHEINSAND ACT DUE TO FRNG.
W0990/26	0630 - 1000 1130 - 1530	GND	2000m / 6500ft	472336N 0070150E	4.1KM / 2.2NM	TEMPO D-AREA BRESSAUCOURT ESTABLISHED FOR AEROBATIC DISPLAY AND FORMATION FLT TRG, RADIUS 4.0KM (472336N0070150E RADIUS 2.2NM), WI SWISS TERRITORY ONLY. FOR FLT IN THE VCY OF TEMPO D-AREA IT IS RECOMMENDED TO MONITOR AND BLIND TRANSMIT PSN, ALT AND ROUTING ON BRESSAUCOURT AD FREQ 122.055. PRIORITY FOR HEL EMERG MEDICAL SER (HEMS) AND SAR CTC 122.055 OR +41 32 466 60 73.
W1117/26	0630 - 0930 1145 - 1430	GND	1500m / 5000ft	470619N 0091955E	8.0KM / 4.4NM	TEMPO D-AREA FLUMS ESTABLISHED WI AREA: 470600N0091510E 470910N0091510E 470910N0092050E 470450N0092550E 470230N0092250E 470600N0091510E (470619N0091955E RADIUS 4.4NM). DUE TO INTENSE MIL FLYING ACT. CROSSING TFC RECOMMENDED TO MONITOR AND BLIND TRANSMIT PSN, ALT AND ROUTING ON 128.110.



Firing-Nr AIP-Area NOTAM-Nr	Validity UTC	Lower Limit (m/ft AMSL or FL)	Upper Limit (m/ft AMSL or FL)	Center Point	Covering Radius	NOTAM Item E
W1119/26	0630 - 0930 1145 - 1430	GND	2000m / 6500ft	464450N 0092032E	12.3KM / 6.6NM	TEMPO D-AREA BONADUZ ESTABLISHED WI AREA: 464720N0091140E 465040N0092500E 464120N0092840E 464040N0092500E 464640N0092240E 464420N0091300E 464720N0091140E (464450N0092032E RADIUS 6.6NM). DUE TO INTENSE MIL FLYING ACT. CROSSING TFC RECOMMENDED TO MONITOR AND BLIND TRANSMIT PSN, ALT AND ROUTING ON 128.110.
W1144/26	0000 - 0300 2130 - 2359	GND	FL195	473426N 0090252E	0.3KM / 0.2NM	TEMPO R-AREA AMLIKON ESTABLISHED RADIUS 0.2KM (473426N0090252E RADIUS 0.2NM). WX MEASUREMENTS BY REMOTELY PILOTED AERIAL SYSTEM WILL TAKE PLACE. WHITE BLINKING PSN LGT WITH VISUAL RANGE OF AT LEAST 3KM. ENTRY PROHIBITED WHEN ACT EXC HEL EMERG MEDICAL SER (HEMS). FOR INFO ON ACT AND HEMS CTC TEL +41 79 772 93 32 OR +41 79 596 93 33.
W1148/26	1145 - 1245	GND	FL120	464320N 0063239E	10.1KM / 5.5NM	TEMPO R-AREA ORBE ESTABLISHED DUE TO AIR DISPLAY, RADIUS 10KM (464320N0063239E RADIUS 5.5NM) WI SWISS TERRITORY ONLY. ENTRY PROHIBITED WHEN ACT EXC HEMS (HEL EMERG MEDICAL SER). FOR INFO ON ACT CTC GENEVA INFO 126.350. HEMS FLT CTC COOR FREQ 130.805.

Activities not shown on the DABS Chart Side:

NOTAM-Nr	Validity UTC	Lower Limit (m/ft AMSL or FL)	Upper Limit (m/ft AMSL or FL)	Center Point	Covering Radius	NOTAM Item E
None						

For detailed information regarding the DABS see AIP Switzerland GEN 3.1-5 or VFR GEN 1-0-4.