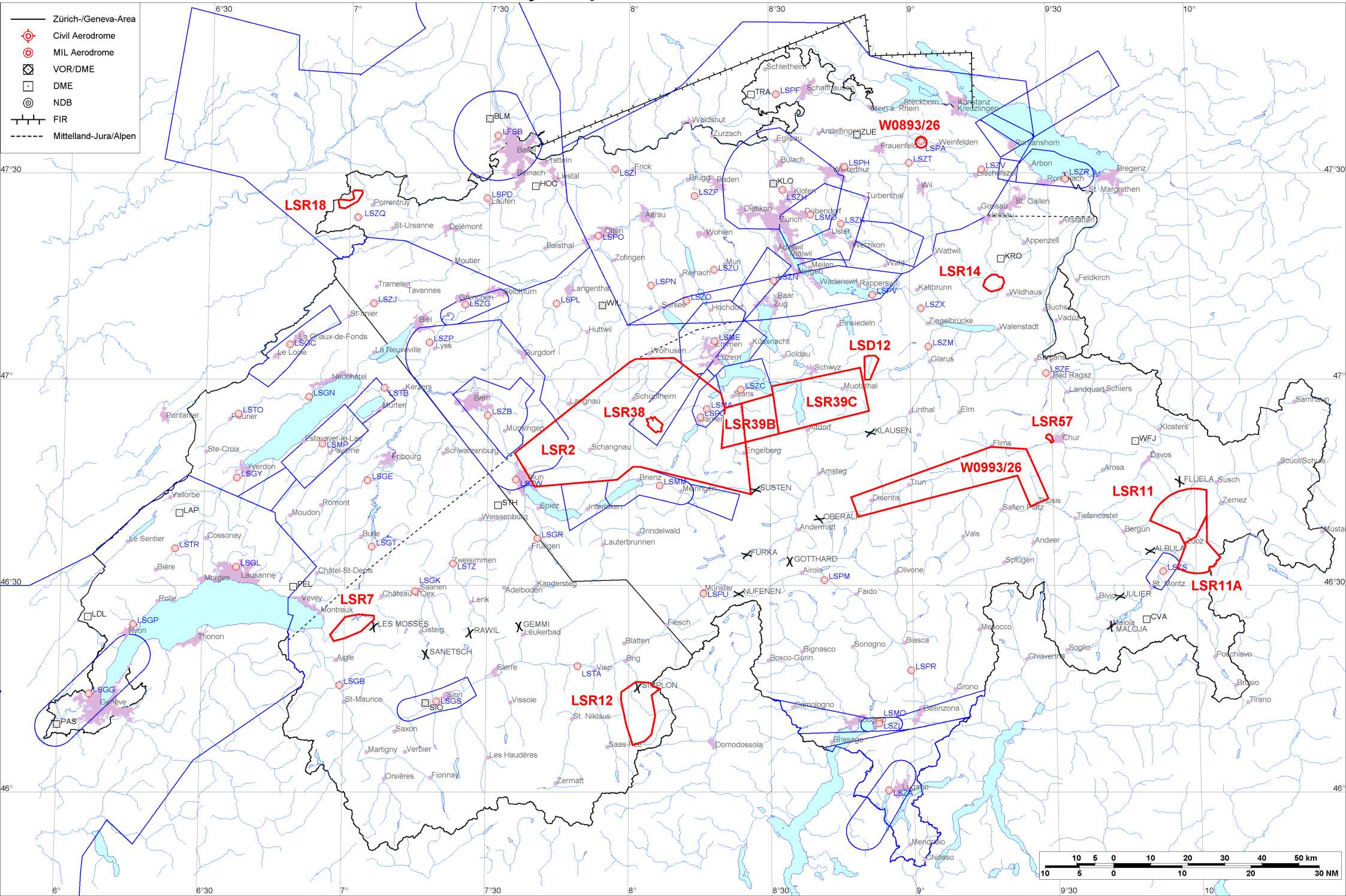


- Zürich-/Geneva-Area
- ⊕ Civil Aerodrome
- ⊙ MIL Aerodrome
- ⊠ VOR/DME
- DME
- ⊙ NDB
- FIR
- - - - - Mittelland-Jura/Alpen





Firings / AIP-Areas / Warnings:

Firing-Nr AIP-Area NOTAM-Nr	Validity UTC	Lower Limit (m/ft AMSL or FL)	Upper Limit (m/ft AMSL or FL)	Center Point	Covering Radius	NOTAM Item E
LSD12 W0314/26	0600 - 1000 1100 - 2100	GND	3000m / 9850ft	470140N 0085126E	3.6KM / 2.0NM	D-AREA LSD12 SIHLTAL ACT.
LSR2 W1150/26	0640 - 0720 1140 - 1220	FL100	FL130	464812N 0080120E	32.6KM / 17.6NM	R-AREA LSR2 HOHGANT ACT.
LSR7 W1091/26	0530 - 2100	GND	4700m / 15500ft	462408N 0070145E	6.5KM / 3.5NM	R-AREA LSR7 HONGRIN ACT DUE TO FRNG.
LSR11 W1139/26	0600 - 1500	GND	9600m / 31500ft	464054N 0095706E	8.9KM / 4.8NM	R-AREA LSR11 S-CHANF ACT.
LSR11A W1141/26	0600 - 1500	2150m / 7000ft	9600m / 31500ft	463605N 0095959E	8.3KM / 4.5NM	R-AREA LSR11A S-CHANF ACT.
LSR12 W1135/26	0700 - 1600	GND	6850m / 22500ft	461121N 0080238E	8.7KM / 4.7NM	R-AREA LSR12 SIMPLON ACT DUE TO FRNG.
LSR14 W1127/26	0530 - 2100	GND	3800m / 12500ft	471401N 0091801E	2.9KM / 1.6NM	R-AREA LSR14 SANTIS ACT DUE TO FRNG.
LSR18 W1133/26	0800 - 2000	GND	1350m / 4500ft	472612N 0070011E	3.8KM / 2.1NM	R-AREA LSR18 BURE ACT DUE TO MIL UAV ACT.
LSR38 W0310/26	0600 - 2000	GND	2300m / 7500ft	465317N 0080519E	2.6KM / 1.4NM	R-AREA LSR38 GLAUBENBERG-WASSERFALLEN ACT DUE TO FRNG.
LSR39B W1145/26	0700 - 0900 1200 - 1400	2750m / 9000ft	FL130	465352N 0082513E	10.1KM / 5.5NM	R-AREA LSR39B BRISEN ACT. LOWER LIMIT 9000FT AMSL OR 2000FT GND WHICHEVER IS HIGHER.
LSR39C W1146/26	0700 - 0900 1200 - 1400	2750m / 9000ft	FL130	465652N 0084033E	14.2KM / 7.7NM	R-AREA LSR39C STOOS ACT. LOWER LIMIT 9000FT AMSL OR 2000FT GND WHICHEVER IS HIGHER.
LSR57 W1143/26	0600 - 1000 1100 - 2000	GND	2000m / 6500ft	465122N 0092930E	1.3KM / 0.7NM	R-AREA LSR57 ROSSBODEN-RHEINSAND ACT DUE TO FRNG.
W0893/26	0000 - 0300 2130 - 2359	GND	FL195	473426N 0090252E	0.3KM / 0.2NM	TEMPO R-AREA AMLIKON ESTABLISHED RADIUS 0.2KM (473426N0090252E RADIUS 0.2NM). WX MEASUREMENTS BY REMOTELY PILOTED AERIAL SYSTEM WILL TAKE PLACE. WHITE BLINKING PSN LGT WITH VISUAL RANGE OF AT LEAST 3KM. ENTRY PROHIBITED WHEN ACT EXC HEL EMERG MEDICAL SER (HEMS). FOR INFO ON ACT AND HEMS CTC TEL +41 79 772 93 32.



Firing-Nr AIP-Area NOTAM-Nr	Validity UTC	Lower Limit (m/ft AMSL or FL)	Upper Limit (m/ft AMSL or FL)	Center Point	Covering Radius	NOTAM Item E
W0993/26	0630 - 0930 1145 - 1430 1745 - 1830	GND	2000m / 6500ft	464247N 0090805E	26.7KM / 14.4NM	TEMPO D-AREA ILANZ ESTABLISHED WI AREA 464250N0084710E 465010N0091700E 464950N0092430E 464240N0092900E 464130N0092510E 464600N0092230E 464000N0084840E 464250N0084710E (464247N0090805E RADIUS 14.4NM). DUE TO INTENSE MIL FLYING ACT. CROSSING TFC RECOMMENDED TO MONITOR AND BLIND TRANSMIT PSN, ALT AND ROUTING ON 128.110.

Activities not shown on the DABS Chart Side:

NOTAM-Nr	Validity UTC	Lower Limit (m/ft AMSL or FL)	Upper Limit (m/ft AMSL or FL)	Center Point	Covering Radius	NOTAM Item E
W0617/26	0600 - 1829	GND	2150m / 7000ft	461402N 0090543E	5.0KM / 2.7NM	INTENSIVE GLD / GLD TOWING ACT (GLD CAMP) WILL TAKE PLACE, RADIUS 5.0KM (461402N0090543E RADIUS 2.7NM). BLW TMA LOCARNO.

For detailed information regarding the DABS see AIP Switzerland GEN 3.1-5 or VFR GEN 1-0-4.