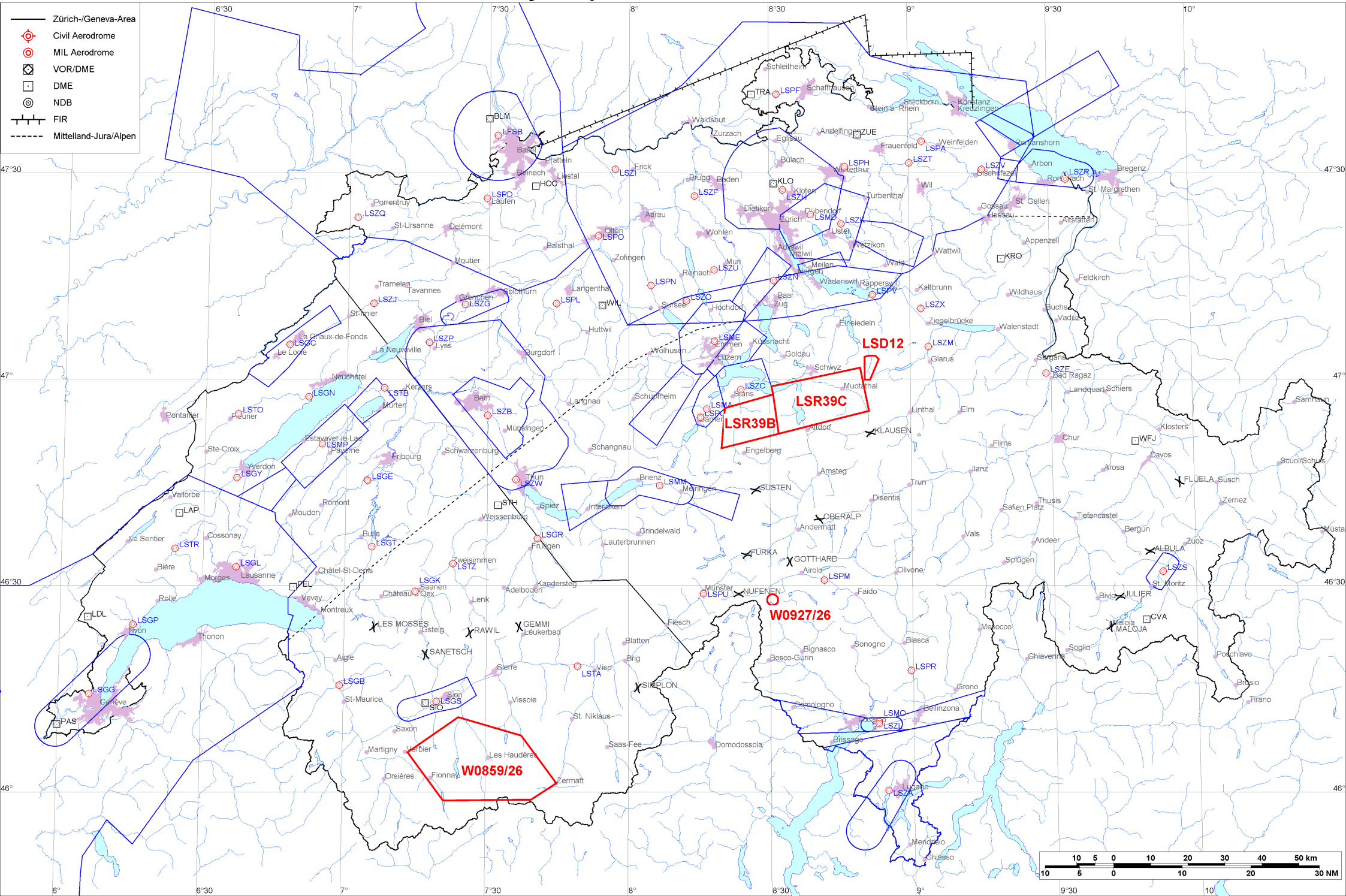


- Zürich-/Geneva-Area
- ⊕ Civil Aerodrome
- ⊙ MIL Aerodrome
- ⊠ VOR/DME
- DME
- ⊙ NDB
- FIR
- - - - - Mittelland-Jura/Alpen





Firings / AIP-Areas / Warnings:

Firing-Nr AIP-Area NOTAM-Nr	Validity UTC	Lower Limit (m/ft AMSL or FL)	Upper Limit (m/ft AMSL or FL)	Center Point	Covering Radius	NOTAM Item E
LSD12 W0004/26	1100 - 2100	GND	3000m / 9850ft	470140N 0085126E	3.6KM / 2.0NM	D-AREA LSD12 SIHLTAL ACT.
LSR39B W0912/26	1200 - 1400	2750m / 9000ft	FL130	465352N 0082513E	10.1KM / 5.5NM	R-AREA LSR39B BRISEN ACT. LOWER LIMIT 9000FT AMSL OR 2000FT GND WHICHEVER IS HIGHER.
LSR39C W0913/26	1200 - 1400	2750m / 9000ft	FL130	465652N 0084033E	14.2KM / 7.7NM	R-AREA LSR39C STOOS ACT. LOWER LIMIT 9000FT AMSL OR 2000FT GND WHICHEVER IS HIGHER.
W0859/26	0530 - 1600	GND	FL130	460332N 0072921E	20.6KM / 11.2NM	TEMPO D-AREA PATROUILLE DES GLACIERS ESTABLISHED WI AERA: 460546N0071343E 461050N0072417E 460810N0073733E 460116N0074457E 455851N0073938E 455845N0072113E 460546N0071343E (460332N0072921E RADIUS 11.2NM), WI SWISS AIRSPACE ONLY. EXP INTENSE HEL FLT ACT. NO COORDINATION FREQ OR TEL NUMBER AVBL.
! W0927/26	0000 - 2359	GND	3050m / 10000ft	462755N 0083025E	0.6KM / 0.3NM	TEMPO R-AREA ESTABLISHED AT 4.3 KM E OF PASSO SAN GIACOMO, RADIUS 0.5KM (462755N0083025E RADIUS 0.3NM) DUE TO SAR. ENTRY PROHIBITED FOR CIVIL AIRCRAFT EXC HEL EMERG MEDICAL SER (HEMS), SEARCH AND RESCUE (SAR), SUPPORT AND ESSENTIAL LOGISTIC FLIGHT AS DEFINED BY FOCA.

Activities not shown on the DABS Chart Side:

NOTAM-Nr	Validity UTC	Lower Limit (m/ft AMSL or FL)	Upper Limit (m/ft AMSL or FL)	Center Point	Covering Radius	NOTAM Item E
None						

For detailed information regarding the DABS see AIP Switzerland GEN 3.1-5 or VFR GEN 1-0-4.

! New or changed data regarding an earlier version of the DABS.