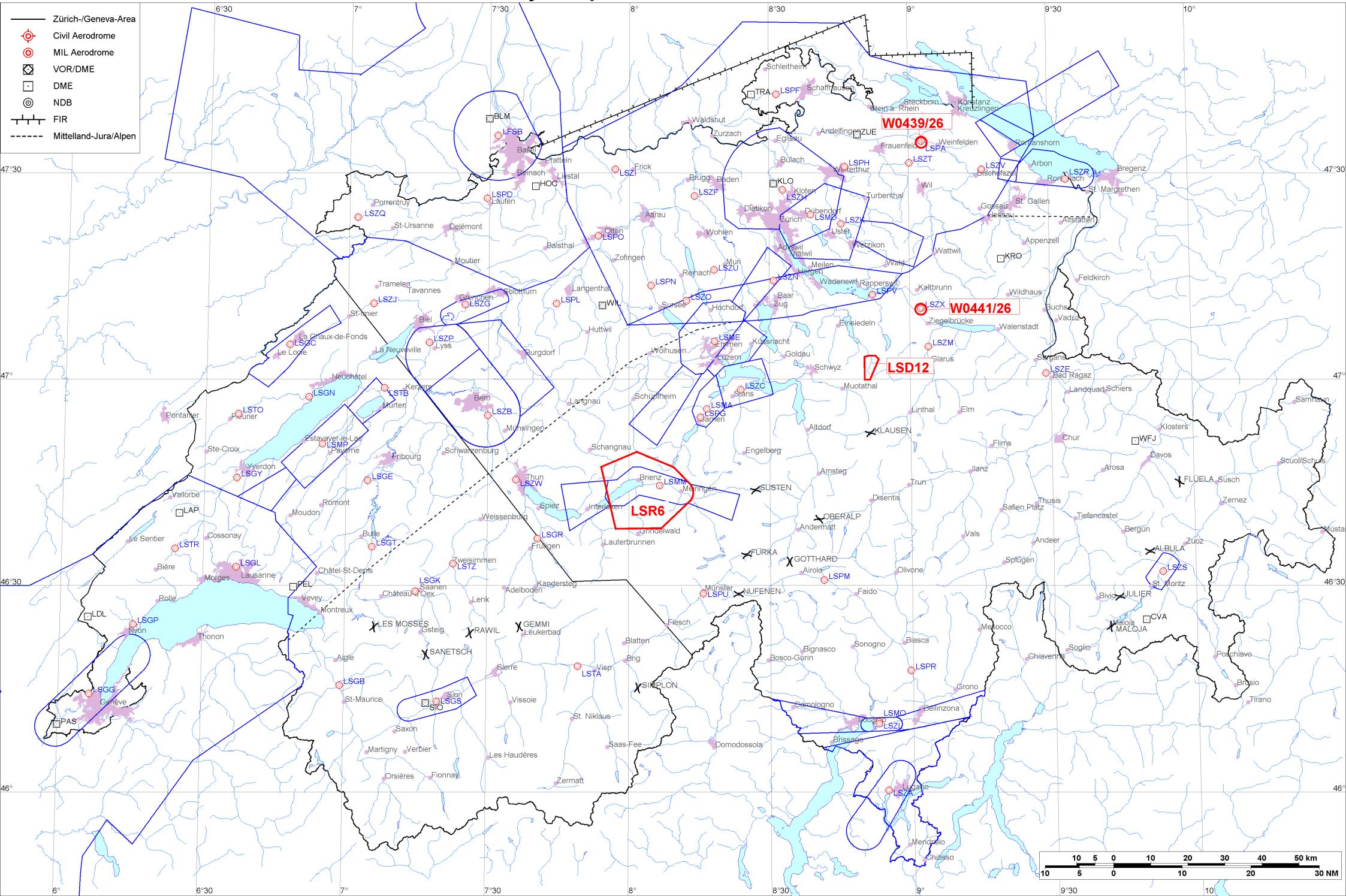


- Zürich-/Geneva-Area
- ⊕ Civil Aerodrome
- ⊙ MIL Aerodrome
- ⊠ VOR/DME
- DME
- ⊙ NDB
- FIR
- - - - - Mittelland-Jura/Alpen





Firings / AIP-Areas / Warnings:

Firing-Nr AIP-Area NOTAM-Nr	Validity UTC	Lower Limit (m/ft AMSL or FL)	Upper Limit (m/ft AMSL or FL)	Center Point	Covering Radius	NOTAM Item E
LSD12 W0164/26	0700 - 1100 1200 - 2100	GND	3000m / 9850ft	470140N 0085126E	3.6KM / 2.0NM	D-AREA LSD12 SIHTAL ACT.
LSR6 W0527/26	0745 - 1100 1230 - 1530	1850m / 6000ft	FL130	464400N 0080322E	13.3KM / 7.2NM	R-AREA LSR6 AXALP ACT.
! W0439/26	2230 - 2359	GND	FL195	473426N 0090252E	0.3KM / 0.2NM	TEMPO R-AREA AMLIKON ESTABLISHED RADIUS 0.2KM (473426N0090252E RADIUS 0.2NM). WX MEASUREMENTS BY REMOTELY PILOTED AERIAL SYSTEM WILL TAKE PLACE. WHITE BLINKING PSN LGT WITH VISUAL RANGE OF AT LEAST 3KM. ENTRY PROHIBITED WHEN ACT EXC HEL EMERG MEDICAL SER (HEMS). FOR INFO ON ACT AND HEMS CTC TEL +41 79 772 93 32.
W0441/26	2100 - 2359	GND	3400m / 11200ft	471010N 0090224E	0.6KM / 0.4NM	TEMPO D-AREA SCHANIS ESTABLISHED RADIUS 0.6KM (471010N0090224E RADIUS 0.4NM). WX MEASUREMENTS BY REMOTELY PILOTED AERIAL SYSTEM WILL TAKE PLACE. WHITE BLINKING PSN LGT WITH VISUAL RANGE OF AT LEAST 3KM. FOR INFO ON ACT AND HEL EMERG MEDICAL SER (HEMS) CTC TEL +41 79 613 88 02.

Activities not shown on the DABS Chart Side:

NOTAM-Nr	Validity UTC	Lower Limit (m/ft AMSL or FL)	Upper Limit (m/ft AMSL or FL)	Center Point	Covering Radius	NOTAM Item E
None						

For detailed information regarding the DABS see AIP Switzerland GEN 3.1-5 or VFR GEN 1-0-4.

! New or changed data regarding an earlier version of the DABS.