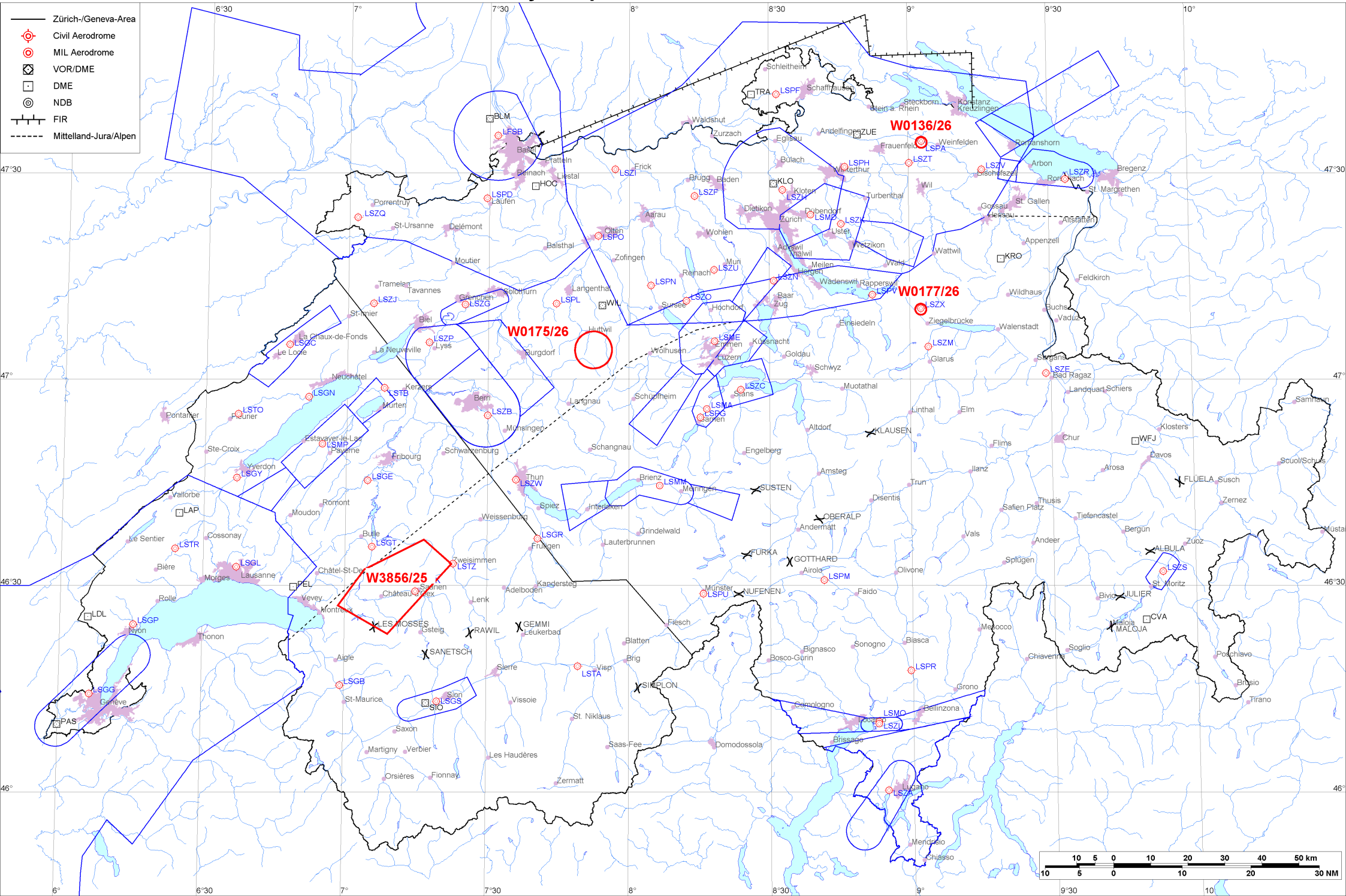


- Zürich-/Geneva-Area
- ⊙ Civil Aerodrome
- ⊙ MIL Aerodrome
- ⊠ VOR/DME
- DME
- ⊙ NDB
- FIR
- - - - - Mittelland-Jura/Alpen





Firings / AIP-Areas / Warnings:

Firing-Nr AIP-Area NOTAM-Nr	Validity UTC	Lower Limit (m/ft AMSL or FL)	Upper Limit (m/ft AMSL or FL)	Center Point	Covering Radius	NOTAM Item E
W0136/26	2230 - 2359	GND	FL195	473426N 0090252E	0.3KM / 0.2NM	TEMPO R-AREA AMLIKON ESTABLISHED RADIUS 0.2KM (473426N0090252E RADIUS 0.2NM). WX MEASUREMENTS BY REMOTELY PILOTED AERIAL SYSTEM WILL TAKE PLACE. WHITE BLINKING PSN LGT WITH VISUAL RANGE OF AT LEAST 3KM. ENTRY PROHIBITED WHEN ACT EXC HEL EMERG MEDICAL SER (HEMS). FOR INFO ON ACT AND HEMS CTC TEL +41 79 772 93 32 / +41 79 596 93 33.
W0175/26	0800 - 2300	GND	2300m / 7600ft	470415N 0075225E	5.1KM / 2.8NM	TEMPO R-AREA ERISWIL ESTABLISHED DUE TO HELIKITE WITH GROUND CABLE AND UNMANNED ACFT FLT, RADIUS 5.0KM (470415N0075225E RADIUS 2.7NM) ENTRY PROHIBITED WHEN ACT EXC ACFT INVOLVED IN TEST MISSIONS AND HEL EMERG MEDICAL SERVICES (HEMS). HEMS CTC +41 79 826 94 68
W0177/26	2100 - 2359	GND	3400m / 11200ft	471010N 0090224E	0.6KM / 0.4NM	TEMPO D-AREA SCHANIS ESTABLISHED, RADIUS 0.6KM (471010N0090224E RADIUS 0.4NM). WX MEASUREMENTS BY REMOTELY PILOTED AERIAL SYSTEM WILL TAKE PLACE. WHITE BLINKING POSITION LGT WITH VISUAL RANGE OF AT LEAST 3KM. FOR INFO ON ACT AND HEL EMERG MEDICAL SER (HEMS) CTC TEL +41 79 772 93 32.
W3856/25	0630 - 1730	GND	FL100	463008N 0071033E	16.3KM / 8.8NM	TEMPO D-AREA CHATEAU D OEX ESTABLISHED DUE TO INTENSE BALLOON ACT WI AREA: 463219N0070408E 463641N0071641E 463309N0072231E 462257N0070907E 462705N0065837E 463219N0070408E (463008N0071033E RADIUS 8.8NM). INFORMATION ON CHATEAU D OEX INFO 130.055.

Activities not shown on the DABS Chart Side:

NOTAM-Nr	Validity UTC	Lower Limit (m/ft AMSL or FL)	Upper Limit (m/ft AMSL or FL)	Center Point	Covering Radius	NOTAM Item E
None						

For detailed information regarding the DABS see AIP Switzerland GEN 3.1-5 or VFR GEN 1-0-4.