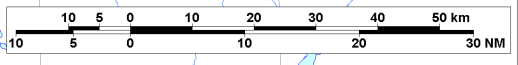
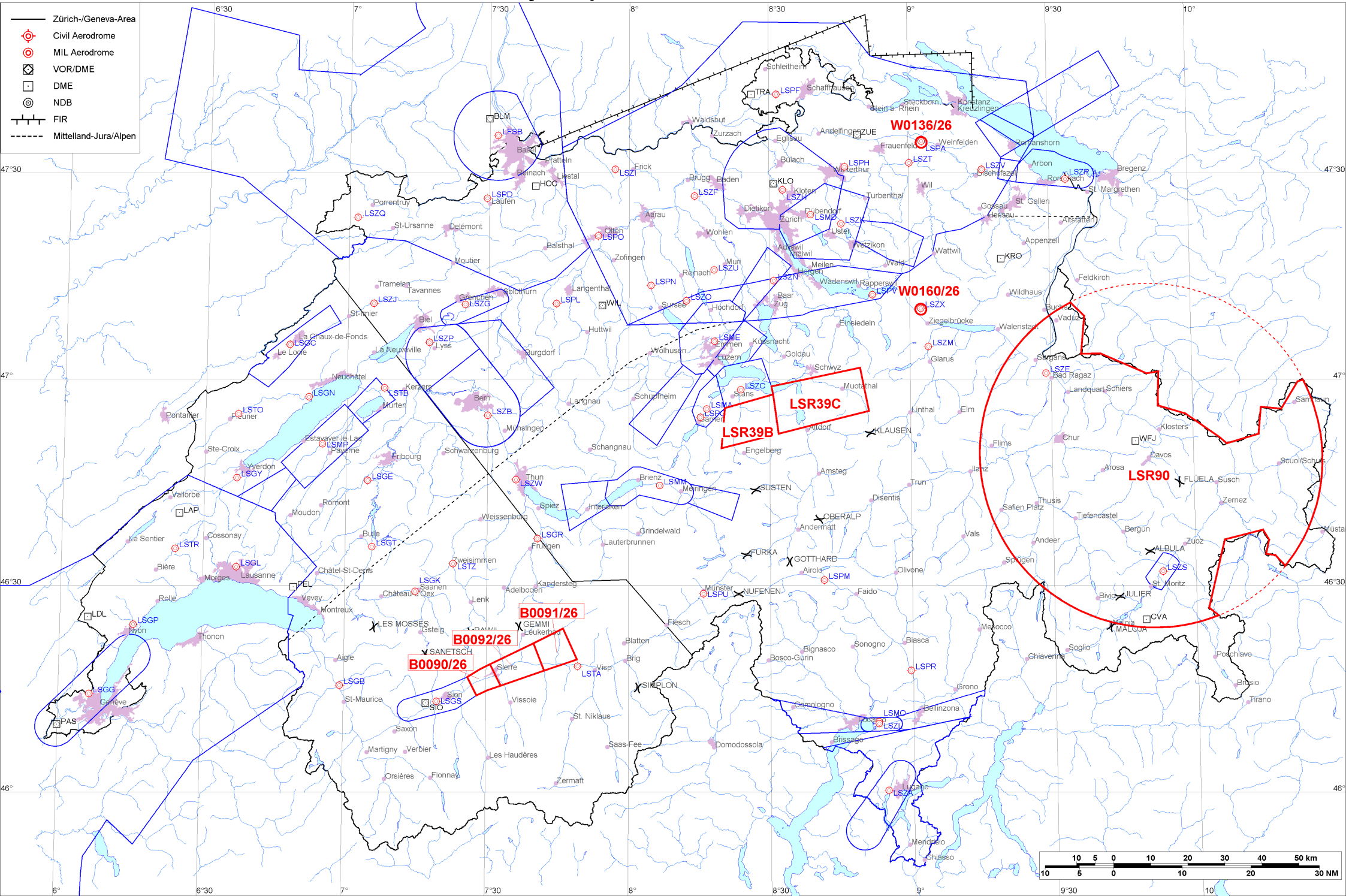


- Zürich-/Geneva-Area
- ⊕ Civil Aerodrome
- ⊙ MIL Aerodrome
- ⊠ VOR/DME
- DME
- ⊙ NDB
- FIR
- - - - - Mittelland-Jura/Alpen





Firings / AIP-Areas / Warnings:

Firing-Nr AIP-Area NOTAM-Nr	Validity UTC	Lower Limit (m/ft AMSL or FL)	Upper Limit (m/ft AMSL or FL)	Center Point	Covering Radius	NOTAM Item E
LSR39B W0142/26	1300 - 1500	2750m / 9000ft	FL130	465352N 0082513E	10.1KM / 5.5NM	R-AREA LSR39B BRISEN ACT. LOWER LIMIT 9000FT AMSL OR 2000FT GND WHICHEVER IS HIGHER.
LSR39C W0143/26	1300 - 1500	2750m / 9000ft	FL130	465652N 0084033E	14.2KM / 7.7NM	R-AREA LSR39C STOOS ACT. LOWER LIMIT 9000FT AMSL OR 2000FT GND WHICHEVER IS HIGHER.
LSR90 W3989/25	0000 - 2359	GND	FL195	464853N 0095058E	46.4KM / 25.1NM	TEMPO R-AREA LSR90 DAVOS ESTABLISHED, RADIUS 47KM (SWISS TERRITORY INCLUSIVE LIECHTENSTEIN, 464853N0095058E, RADIUS 25NM) DUE TO WORLD ECONOMIC FORUM (WEF). SPECIAL REGULATIONS APPLICABLE FOR FLT TO AD LSZS, LSXM, LSZE, LSXU AND LSXB. FOR DETAILED INFO CONSULT VFR MANUAL SUP 006/25, AIRAC AIP SUP 008/25 AND WWW.BAZL.ADMIN.CH/WEF OR CTC APPROPRIATE AD MANAGER. SPECIAL REGULATIONS FOR HANGGLIDER/PARAGLIDER (WWW.SHV-FSVL.CH) AND DRONES (WWW.MAP.GEO.ADMIN.CH).
B0090/26	0000 - 2359	900m / 3000ft	FL130	461610N 0072940E	4.7KM / 2.6NM	SION TEMPO MIL TMA SECT 1 ACT.
B0091/26	0000 - 2359	3050m / 10000ft	FL130	462031N 0074437E	6.4KM / 3.5NM	SION TEMPO MIL TMA SECT 3 ACT.
B0092/26	0000 - 2359	1850m / 6000ft	FL130	461821N 0073637E	7.4KM / 4.0NM	SION TEMPO MIL TMA SECT 2 ACT.
W0136/26	2230 - 2359	GND	FL195	473426N 0090252E	0.3KM / 0.2NM	TEMPO R-AREA AMLIKON ESTABLISHED RADIUS 0.2KM (473426N0090252E RADIUS 0.2NM). WX MEASUREMENTS BY REMOTELY PILOTED AERIAL SYSTEM WILL TAKE PLACE. WHITE BLINKING PSN LGT WITH VISUAL RANGE OF AT LEAST 3KM. ENTRY PROHIBITED WHEN ACT EXC HEL EMERG MEDICAL SER (HEMS). FOR INFO ON ACT AND HEMS CTC TEL +41 79 772 93 32 / +41 79 596 93 33.
W0160/26	2100 - 2359	GND	3400m / 11200ft	471010N 0090224E	0.6KM / 0.4NM	TEMPO D-AREA SCHANIS ESTABLISHED, RADIUS 0.6KM (471010N0090224E RADIUS 0.4NM). WX MEASUREMENTS BY REMOTELY PILOTED AERIAL SYSTEM WILL TAKE PLACE. WHITE BLINKING POSITION LGT WITH VISUAL RANGE OF AT LEAST 3KM. FOR INFO ON ACT AND HEL EMERG MEDICAL SER (HEMS) CTC TEL +41 79 772 93 32.

Activities not shown on the DABS Chart Side:

NOTAM-Nr	Validity UTC	Lower Limit (m/ft AMSL or FL)	Upper Limit (m/ft AMSL or FL)	Center Point	Covering Radius	NOTAM Item E
! W0170/26	1652 - 2100	GND	FL130	464500N 0080800E	181.5KM / 98.1NM	MIL NGT FLT WITH HEL WILL TAKE PLACE WI FLW TRG AREAS: ZUGERSEE, GRAUBUNDEN, KLAUSEN, SARGANS, TICINO REF VFR MANUAL RAC 3-2-3 (MIL NGT FLT CHART). UPPER LIMIT: AIRSPACE CLASS E OR MAX ACCORDING TO ITEM G.
W3992/25	0000 - 2359	GND	4250m / 13950ft	464853N 0095058E	46.3KM / 25.0NM	EXP MIL UNMANNED ACFT ACT WI TEMPO R-AREA LSR90 DAVOS. NO PREPLANNED ACT SE OF LINE FLUELAPASS - JULIERPASS.
W4058/25	0000 - 2359	FL130	FL150	464500N 0080800E	181.5KM / 98.1NM	MIL ON: UPPER LIMIT AIRSPACE ECHO OVER ALPS FL130. REF VFR MANUAL GEN 1-0-5 PARAGRAPH 6.



For detailed information regarding the DABS see AIP Switzerland GEN 3.1-5 or VFR GEN 1-0-4.  
! New or changed data regarding an earlier version of the DABS.