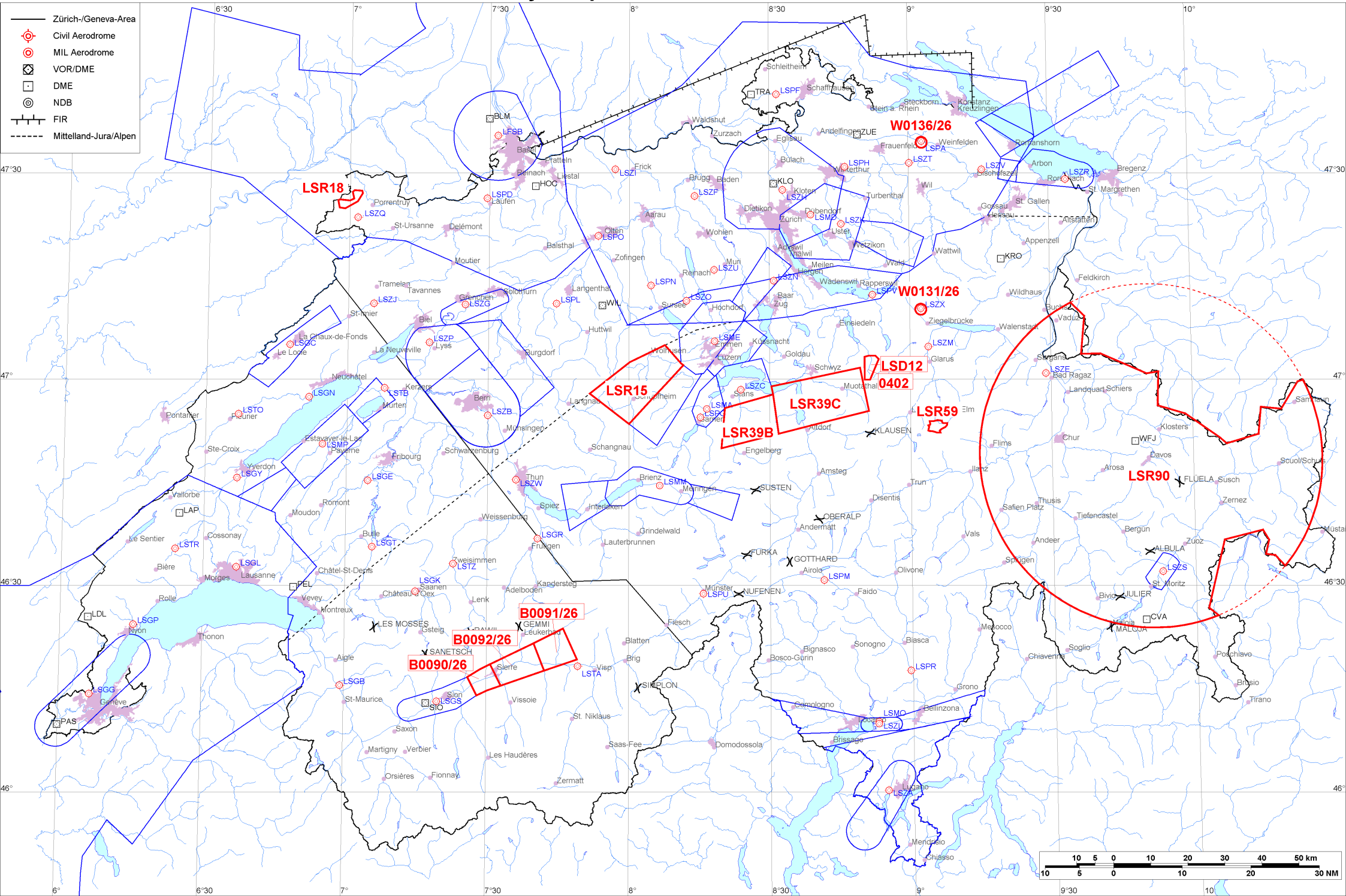


- Zürich-/Geneva-Area
- ⊕ Civil Aerodrome
- ⊙ MIL Aerodrome
- ⊠ VOR/DME
- DME
- ⊙ NDB
- FIR
- - - - - Mittelland-Jura/Alpen





Firings / AIP-Areas / Warnings:

Firing-Nr AIP-Area NOTAM-Nr	Validity UTC	Lower Limit (m/ft AMSL or FL)	Upper Limit (m/ft AMSL or FL)	Center Point	Covering Radius	NOTAM Item E
0402 W0141/26	0800 - 1100	GND	3300m / 10850ft	470140N 0085126E	3.6KM / 2.0NM	FRNG WILL TAKE PLACE AREA 6.5 KM SE EUTHAL, 470325N0085236E 470255N0085316E 465955N0085126E 465955N0085016E 470315N0085016E 470325N0085106E 470325N0085236E (470140N0085126E RADIUS 2.0NM).
LSD12 W0093/26	0700 - 1100 1200 - 2100	GND	3000m / 9850ft	470140N 0085126E	3.6KM / 2.0NM	D-AREA LSD12 SIHTAL ACT.
LSR15 W0150/26	1300 - 1600	1700m / 5500ft	FL100	465958N 0080137E	13.3KM / 7.2NM	R-AREA LSR15 ENTLEBUCH ACT.
LSR18 W0122/26	0700 - 1600	GND	1350m / 4500ft	472612N 0070011E	3.8KM / 2.1NM	R-AREA LSR18 BURE ACT DUE TO MIL UAV ACT.
LSR39B W0142/26	0800 - 1000 1300 - 1500	2750m / 9000ft	FL130	465352N 0082513E	10.1KM / 5.5NM	R-AREA LSR39B BRISEN ACT. LOWER LIMIT 9000FT AMSL OR 2000FT GND WHICHEVER IS HIGHER.
LSR39C W0143/26	0800 - 1000 1300 - 1500	2750m / 9000ft	FL130	465652N 0084033E	14.2KM / 7.7NM	R-AREA LSR39C STOOS ACT. LOWER LIMIT 9000FT AMSL OR 2000FT GND WHICHEVER IS HIGHER.
LSR59 W0138/26	0700 - 2100	GND	4700m / 15500ft	465304N 0090543E	2.8KM / 1.5NM	R-AREA LSR59 WICHLEN ACT DUE TO FRNG.
LSR90 W3989/25	0000 - 2359	GND	FL195	464853N 0095058E	46.4KM / 25.1NM	TEMPO R-AREA LSR90 DAVOS ESTABLISHED, RADIUS 47KM (SWISS TERRITORY INCLUSIVE LIECHTENSTEIN, 464853N0095058E, RADIUS 25NM) DUE TO WORLD ECONOMIC FORUM (WEF). SPECIAL REGULATIONS APPLICABLE FOR FLT TO AD LSZS, LSXM, LSZE, LSXU AND LSXB. FOR DETAILED INFO CONSULT VFR MANUAL SUP 006/25, AIRAC AIP SUP 008/25 AND WWW.BAZL.ADMIN.CH/WEF OR CTC APPROPRIATE AD MANAGER. SPECIAL REGULATIONS FOR HANGGLIDER/PARAGLIDER (WWW.SHV-FSVL.CH) AND DRONES (WWW.MAP.GEO.ADMIN.CH).
B0090/26	0000 - 2359	900m / 3000ft	FL130	461610N 0072940E	4.7KM / 2.6NM	SION TEMPO MIL TMA SECT 1 ACT.
B0091/26	0000 - 2359	3050m / 10000ft	FL130	462031N 0074437E	6.4KM / 3.5NM	SION TEMPO MIL TMA SECT 3 ACT.
B0092/26	0000 - 2359	1850m / 6000ft	FL130	461821N 0073637E	7.4KM / 4.0NM	SION TEMPO MIL TMA SECT 2 ACT.
W0131/26	0000 - 0500 2100 - 2359	GND	3400m / 11200ft	471010N 0090224E	0.6KM / 0.4NM	TEMPO D-AREA SCHANIS ESTABLISHED, RADIUS 0.6KM (471010N0090224E RADIUS 0.4NM). WX MEASUREMENTS BY REMOTELY PILOTED AERIAL SYSTEM WILL TAKE PLACE. WHITE BLINKING POSITION LGT WITH VISUAL RANGE OF AT LEAST 3KM. FOR INFO ON ACT AND HEL EMERG MEDICAL SER (HEMS) CTC TEL +41 79 772 93 32.
W0136/26	0000 - 0400 2230 - 2359	GND	FL195	473426N 0090252E	0.3KM / 0.2NM	TEMPO R-AREA AMLIKON ESTABLISHED RADIUS 0.2KM (473426N0090252E RADIUS 0.2NM). WX MEASUREMENTS BY REMOTELY PILOTED AERIAL SYSTEM WILL TAKE PLACE. WHITE BLINKING PSN LGT WITH VISUAL RANGE OF AT LEAST 3KM. ENTRY PROHIBITED WHEN ACT EXC HEL EMERG MEDICAL SER (HEMS). FOR INFO ON ACT AND HEMS CTC TEL +41 79 772 93 32 / +41 79 596 93 33.



Activities not shown on the DABS Chart Side:

NOTAM-Nr	Validity UTC	Lower Limit (m/ft AMSL or FL)	Upper Limit (m/ft AMSL or FL)	Center Point	Covering Radius	NOTAM Item E
W3992/25	0000 - 2359	GND	4250m / 13950ft	464853N 0095058E	46.3KM / 25.0NM	EXP MIL UNMANNED ACFT ACT WI TEMPO R-AREA LSR90 DAVOS. NO PREPLANNED ACT SE OF LINE FLUELAPASS - JULIERPASS.
W4058/25	0000 - 2359	FL130	FL150	464500N 0080800E	181.5KM / 98.1NM	MIL ON: UPPER LIMIT AIRSPACE ECHO OVER ALPS FL130. REF VFR MANUAL GEN 1-0-5 PARAGRAPH 6.

For detailed information regarding the DABS see AIP Switzerland GEN 3.1-5 or VFR GEN 1-0-4.