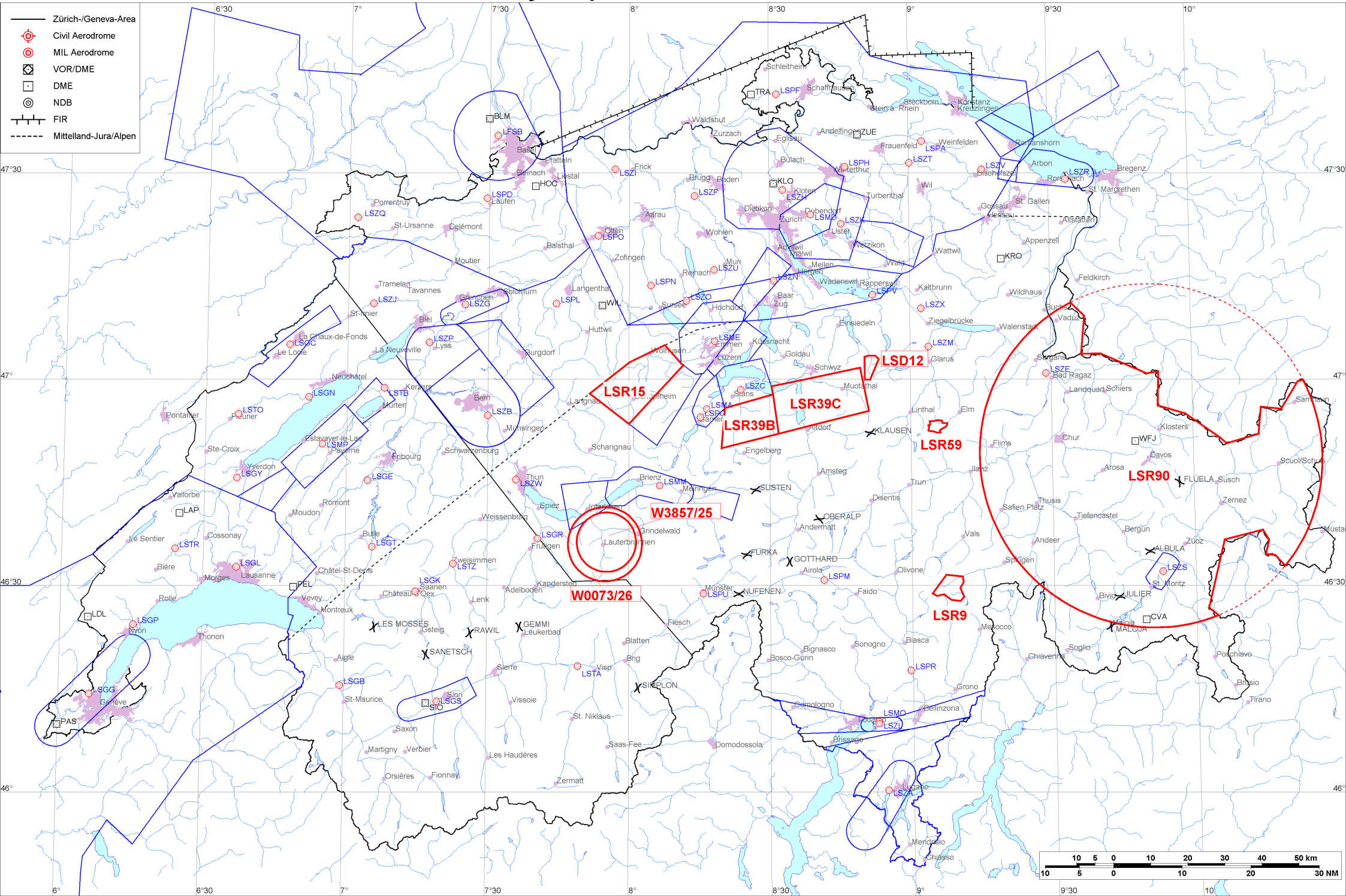


- Zürich-/Geneva-Area
- ⊕ Civil Aerodrome
- ⊙ MIL Aerodrome
- ⊠ VOR/DME
- DME
- ⊙ NDB
- FIR
- - - - - Mittelland-Jura/Alpen





Firings / AIP-Areas / Warnings:

Firing-Nr AIP-Area NOTAM-Nr	Validity UTC	Lower Limit (m/ft AMSL or FL)	Upper Limit (m/ft AMSL or FL)	Center Point	Covering Radius	NOTAM Item E
LSD12 W0078/26	0700 - 1100 1200 - 1700	GND	3000m / 9850ft	470140N 0085126E	3.6KM / 2.0NM	D-AREA LSD12 SIHLTAL ACT.
LSR9 W3982/25	0730 - 1600	GND	7750m / 25500ft	462943N 0090743E	4.8KM / 2.6NM	R-AREA LSR9 HINTERRHEIN ACT DUE TO FRNG.
LSR15 W0049/26	0800 - 1030	1700m / 5500ft	FL100	465958N 0080137E	13.3KM / 7.2NM	R-AREA LSR15 ENTLEBUCH ACT.
LSR39B W0081/26	0800 - 1000 1300 - 1500	2750m / 9000ft	FL130	465352N 0082513E	10.1KM / 5.5NM	R-AREA LSR39B BRISEN ACT. LOWER LIMIT 9000FT AMSL OR 2000FT GND WHICHEVER IS HIGHER.
LSR39C W0082/26	0800 - 1000 1300 - 1500	2750m / 9000ft	FL130	465652N 0084033E	14.2KM / 7.7NM	R-AREA LSR39C STOOS ACT. LOWER LIMIT 9000FT AMSL OR 2000FT GND WHICHEVER IS HIGHER.
LSR59 W0066/26	0700 - 1600	GND	4700m / 15500ft	465304N 0090543E	2.8KM / 1.5NM	R-AREA LSR59 WICHLLEN ACT DUE TO FRNG.
LSR90 W3989/25	0900 - 1600	GND	FL195	464853N 0095058E	46.4KM / 25.1NM	TEMPO R-AREA LSR90 DAVOS ESTABLISHED, RADIUS 47KM (SWISS TERRITORY INCLUSIVE LIECHTENSTEIN, 464853N0095058E, RADIUS 25NM) DUE TO WORLD ECONOMIC FORUM (WEF). SPECIAL REGULATIONS APPLICABLE FOR FLT TO AD LSZS, LSXM, LSZE, LSXU AND LSXB. FOR DETAILED INFO CONSULT VFR MANUAL SUP 006/25, AIRAC AIP SUP 008/25 AND WWW.BAZL.ADMIN.CH/WEF OR CTC APPROPRIATE AD MANAGER. SPECIAL REGULATIONS FOR HANGGLIDER/PARAGLIDER (WWW.SHV-FSVL.CH) AND DRONES (WWW.MAP.GEO.ADMIN.CH).
W0073/26	0945 - 1450	1050m / 3500ft	FL180	463600N 0075500E	10.1KM / 5.5NM	TEMPO R-AREA LAUBERHORN ESTABLISHED DUE TO AIR DISPLAY, 0.6KM SW WENGEN, RADIUS 10.0KM (463600N0075500E RADIUS 5.4NM). NO RESTRICTIONS E OF LINE BRIENZ-GRINDELWALD (463901N0080130E-463300N0080130E) FM 3500FT TO 6500FT AMSL. ENTRY PROHIBITED WHEN ACT, EXC HEL EMERG MEDICAL SER (HEMS). FOR INFO ON ACT CTC ZURICH INFORMATION 124.700. HEMS CTC 130.800 FOR COOR.
W3857/25	0600 - 1600	GND	3050m / 10000ft	463618N 0075517E	8.1KM / 4.4NM	TEMPO D-AREA LAUBERHORN ESTABLISHED 0.3KM S WENGEN, RADIUS 8.0KM (463618N0075517E RADIUS 4.4NM). WI AIRSPACE CLASS E AND G ONLY DUE TO INTENSE HEL ACT. HEL OPERATORS ARE RECOMMENDED TO COORDINATE IN ADVANCE WITH AIR-GLACIERS +41 33 856 05 60 OR SWISSHELICOPTER +41 33 828 90 00.



Activities not shown on the DABS Chart Side:

NOTAM-Nr	Validity UTC	Lower Limit (m/ft AMSL or FL)	Upper Limit (m/ft AMSL or FL)	Center Point	Covering Radius	NOTAM Item E
W3449/25	0710 - 1609	GND	650m / 2150ft	471026N 0092955E	6.1KM / 3.3NM	UNMANNED ACFT ACT WILL TAKE PLACE OVER RHINE VALLEY BTN BUCHS, VADUZ, SEVELEN AND ESCHEN, RADIUS 6.0KM (471026N0092955E RADIUS 3.3NM). FOR INFO AND POSS COOR CTC +385 91 956 5459 OR ROUTES(A)JEDSY.COM
W3992/25	0900 - 1600	GND	4250m / 13950ft	464853N 0095058E	46.3KM / 25.0NM	EXP MIL UNMANNED ACFT ACT WI TEMPO R-AREA LSR90 DAVOS. NO PREPLANNED ACT SE OF LINE FLUELAPASS - JULIERPASS.
W4058/25	0630 - 1600	FL130	FL150	464500N 0080800E	181.5KM / 98.1NM	MIL ON: UPPER LIMIT AIRSPACE ECHO OVER ALPS FL130. REF VFR MANUAL GEN 1-0-5 PARAGRAPH 6.

For detailed information regarding the DABS see AIP Switzerland GEN 3.1-5 or VFR GEN 1-0-4.