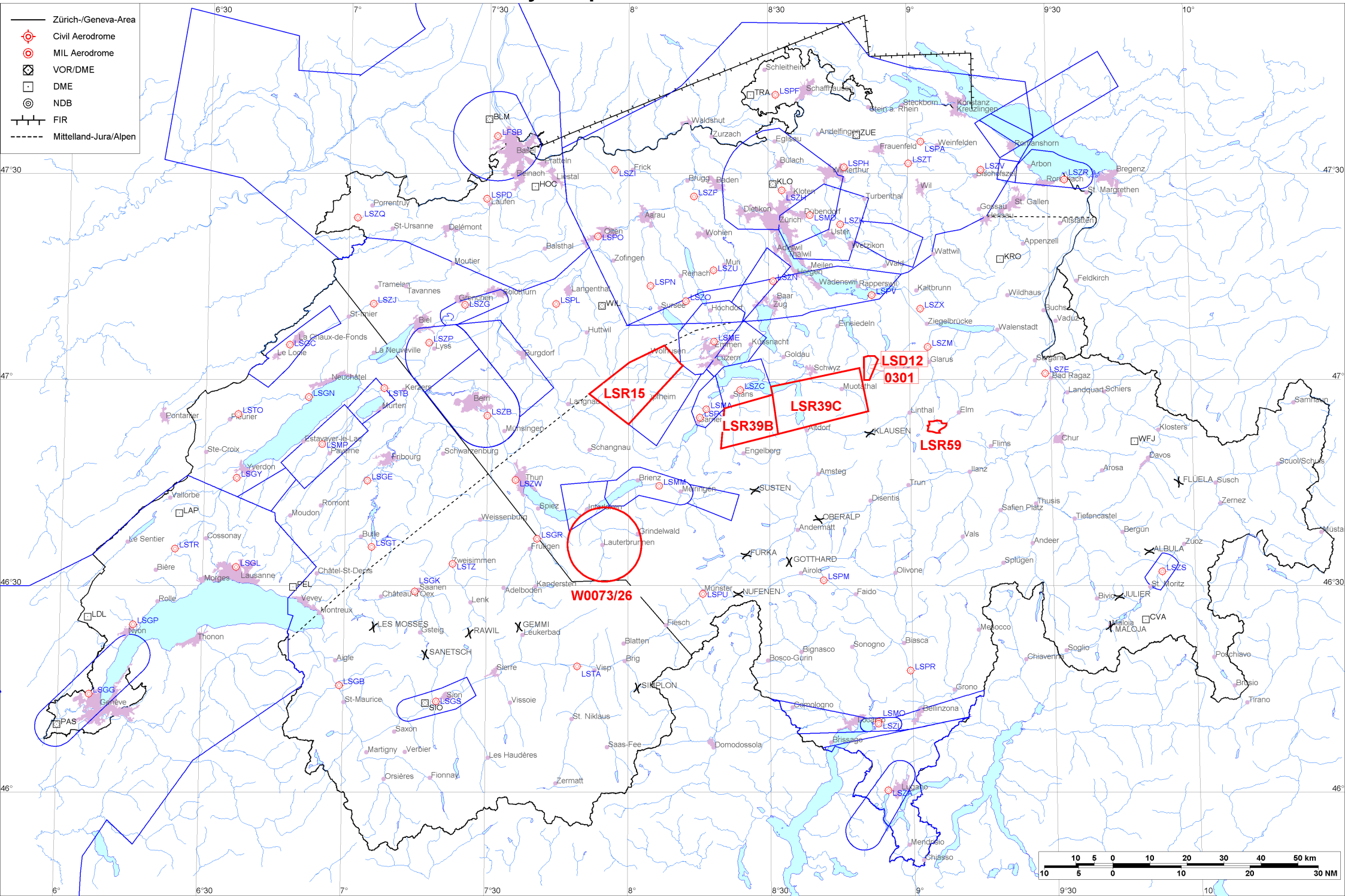


- Zürich-/Geneva-Area
- ⊙ Civil Aerodrome
- ⊙ MIL Aerodrome
- ⊠ VOR/DME
- DME
- ⊙ NDB
- FIR
- - - - - Mittelland-Jura/Alpen





Firings / AIP-Areas / Warnings:

Firing-Nr AIP-Area NOTAM-Nr	Validity UTC	Lower Limit (m/ft AMSL or FL)	Upper Limit (m/ft AMSL or FL)	Center Point	Covering Radius	NOTAM Item E
0301 W0080/26	0800 - 1100 1200 - 1600	GND	3300m / 10850ft	470140N 0085126E	3.6KM / 2.0NM	FRNG WILL TAKE PLACE AREA 6.5 KM SE EUTHAL, 470325N0085236E 470255N0085316E 465955N0085126E 465955N0085016E 470315N0085016E 470325N0085106E 470325N0085236E (470140N0085126E RADIUS 2.0NM).
LSD12 W0078/26	0700 - 1100 1200 - 2100	GND	3000m / 9850ft	470140N 0085126E	3.6KM / 2.0NM	D-AREA LSD12 SIHLTAL ACT.
LSR15 W0074/26	1220 - 1600	1700m / 5500ft	FL100	465958N 0080137E	13.3KM / 7.2NM	R-AREA LSR15 ENTLEBUCH ACT.
LSR39B W0069/26	0800 - 1000 1300 - 1500	2750m / 9000ft	FL130	465352N 0082513E	10.1KM / 5.5NM	R-AREA LSR39B BRISEN ACT. LOWER LIMIT 9000FT AMSL OR 2000FT GND WHICHEVER IS HIGHER.
LSR39C W0070/26	0800 - 1000 1300 - 1500	2750m / 9000ft	FL130	465652N 0084033E	14.2KM / 7.7NM	R-AREA LSR39C STOOS ACT. LOWER LIMIT 9000FT AMSL OR 2000FT GND WHICHEVER IS HIGHER.
LSR59 W0066/26	0700 - 2100	GND	4700m / 15500ft	465304N 0090543E	2.8KM / 1.5NM	R-AREA LSR59 WICHLEN ACT DUE TO FRNG.
W0073/26	0945 - 1245	1050m / 3500ft	FL180	463600N 0075500E	10.1KM / 5.5NM	TEMPO R-AREA LAUBERHORN ESTABLISHED DUE TO AIR DISPLAY, 0.6KM SW WENGEN, RADIUS 10.0KM (463600N0075500E RADIUS 5.4NM). NO RESTRICTIONS E OF LINE BRIENZ-GRINDELWALD (463901N0080130E-463300N0080130E) FM 3500FT TO 6500FT AMSL. ENTRY PROHIBITED WHEN ACT, EXC HEL EMERG MEDICAL SER (HEMS). FOR INFO ON ACT CTC ZURICH INFORMATION 124.700. HEMS CTC 130.800 FOR COOR.

Activities not shown on the DABS Chart Side:

NOTAM-Nr	Validity UTC	Lower Limit (m/ft AMSL or FL)	Upper Limit (m/ft AMSL or FL)	Center Point	Covering Radius	NOTAM Item E
W3449/25	0711 - 1608	GND	650m / 2150ft	471026N 0092955E	6.1KM / 3.3NM	UNMANNED ACFT ACT WILL TAKE PLACE OVER RHINE VALLEY BTN BUCHS, VADUZ, SEVELEN AND ESCHEN, RADIUS 6.0KM (471026N0092955E RADIUS 3.3NM). FOR INFO AND POSS COOR CTC +385 91 956 5459 OR ROUTES(A)JEDSY.COM

For detailed information regarding the DABS see AIP Switzerland GEN 3.1-5 or VFR GEN 1-0-4.