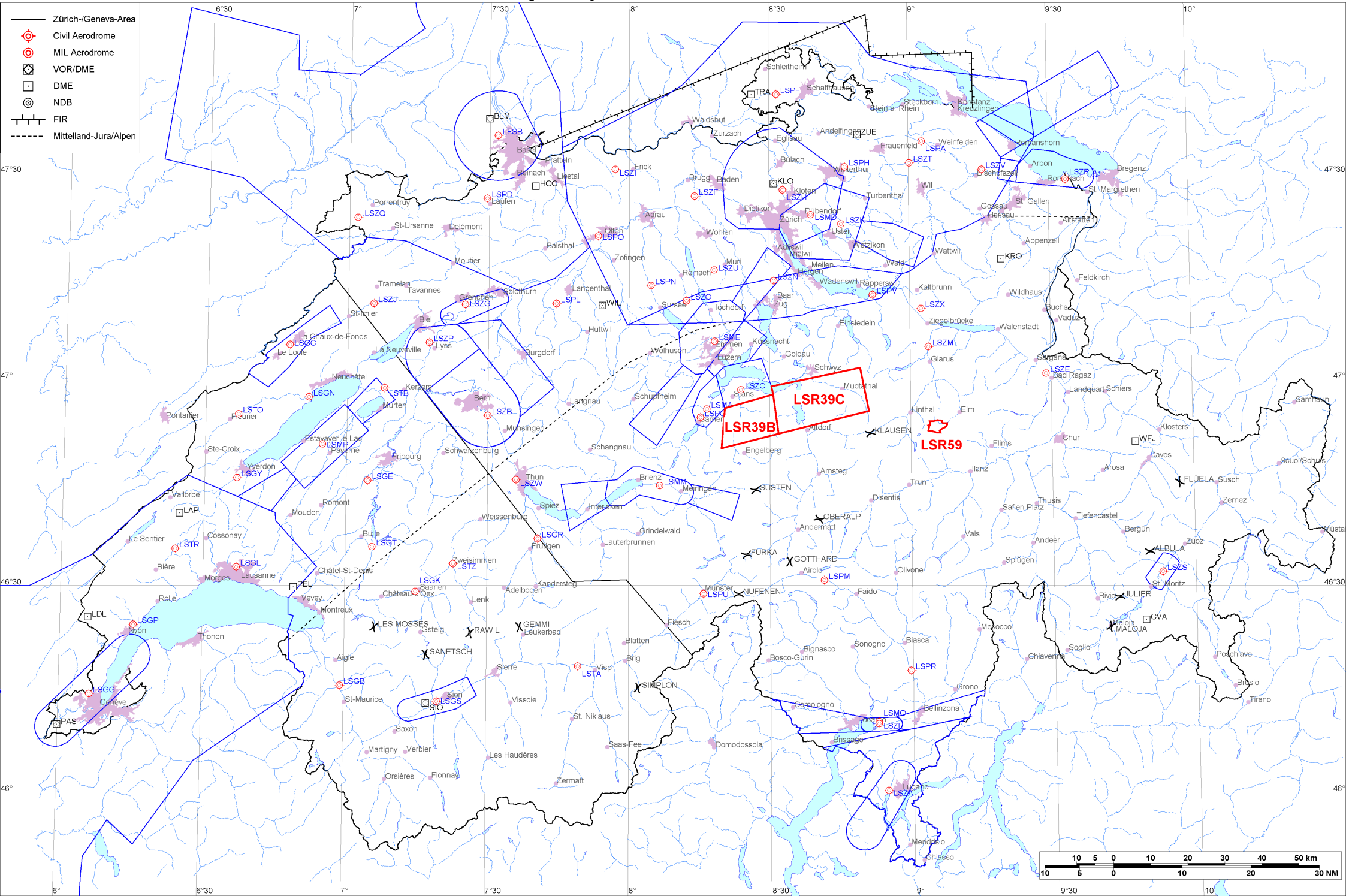


- Zürich-/Geneva-Area
- ⊕ Civil Aerodrome
- ⊙ MIL Aerodrome
- ⊠ VOR/DME
- DME
- ⊙ NDB
- FIR
- - - - - Mittelland-Jura/Alpen





Firings / AIP-Areas / Warnings:

Firing-Nr AIP-Area NOTAM-Nr	Validity UTC	Lower Limit (m/ft AMSL or FL)	Upper Limit (m/ft AMSL or FL)	Center Point	Covering Radius	NOTAM Item E
LSR39B W0055/26	1300 - 1500	2750m / 9000ft	FL130	465352N 0082513E	10.1KM / 5.5NM	R-AREA LSR39B BRISEN ACT. LOWER LIMIT 9000FT AMSL OR 2000FT GND WHICHEVER IS HIGHER.
LSR39C W0056/26	1300 - 1500	2750m / 9000ft	FL130	465652N 0084033E	14.2KM / 7.7NM	R-AREA LSR39C STOOS ACT. LOWER LIMIT 9000FT AMSL OR 2000FT GND WHICHEVER IS HIGHER.
LSR59 W0066/26	1200 - 1700	GND	4700m / 15500ft	465304N 0090543E	2.8KM / 1.5NM	R-AREA LSR59 WICHLEN ACT DUE TO FRNG.

Activities not shown on the DABS Chart Side:

NOTAM-Nr	Validity UTC	Lower Limit (m/ft AMSL or FL)	Upper Limit (m/ft AMSL or FL)	Center Point	Covering Radius	NOTAM Item E
! W0075/26	1645 - 2230	GND	FL250	464500N 0080800E	181.5KM / 98.1NM	MIL NGT FLT WITH UNMANNED ACFT WILL TAKE PLACE WI AIRSPACE SWITZERLAND. FOR FURTHER DETAILS CTC TACTICAL OPS CENTER ON +41 58 467 29 10.
! W0076/26	1639 - 1945	GND	FL100	464500N 0080800E	181.5KM / 98.1NM	MIL NGT FLT WITH HEL WILL TAKE PLACE WI FLW TRG AREAS: SUSTEN GRAUBUNDEN JUNGFRAU SCHANGNAU REF VFR MANUAL RAC 3-2-3 (MIL NGT FLT CHART). UPPER LIMIT: AIRSPACE CLASS E OR MAX ACCORDING TO ITEM G.
W3449/25	0712 - 1606	GND	650m / 2150ft	471026N 0092955E	6.1KM / 3.3NM	UNMANNED ACFT ACT WILL TAKE PLACE OVER RHINE VALLEY BTN BUCHS, VADUZ, SEVELEN AND ESCHEN, RADIUS 6.0KM (471026N0092955E RADIUS 3.3NM). FOR INFO AND POSS COOR CTC +385 91 956 5459 OR ROUTES(A)JEDSY.COM

For detailed information regarding the DABS see AIP Switzerland GEN 3.1-5 or VFR GEN 1-0-4.

! New or changed data regarding an earlier version of the DABS.