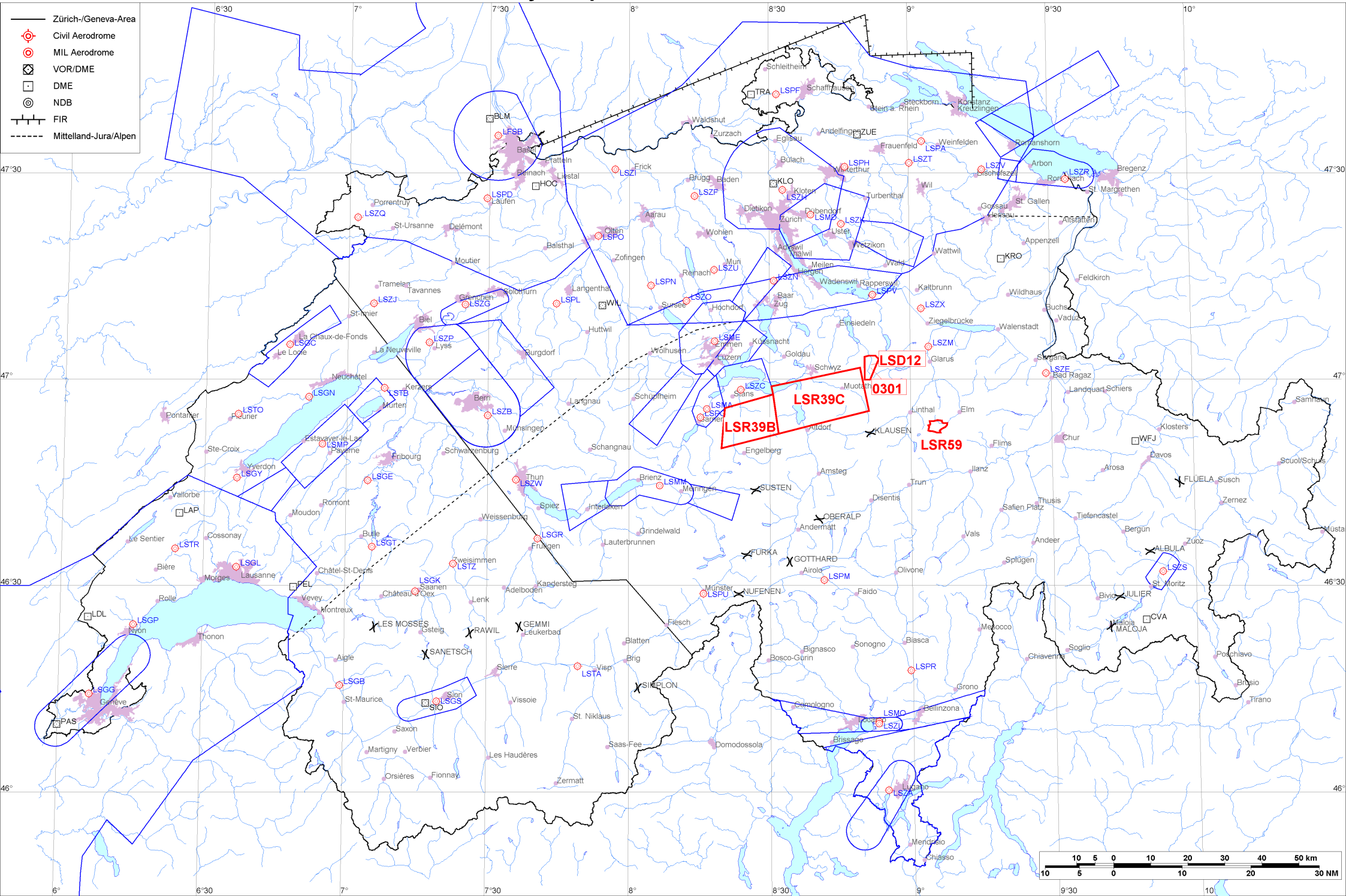


- Zürich-/Geneva-Area
- ⊕ Civil Aerodrome
- ⊙ MIL Aerodrome
- ⊠ VOR/DME
- DME
- ⊙ NDB
- FIR
- - - - - Mittelland-Jura/Alpen





Firings / AIP-Areas / Warnings:

Firing-Nr AIP-Area NOTAM-Nr	Validity UTC	Lower Limit (m/ft AMSL or FL)	Upper Limit (m/ft AMSL or FL)	Center Point	Covering Radius	NOTAM Item E
! 0301 W0068/26	1200 - 1600	GND	3300m / 10850ft	470140N 0085126E	3.6KM / 2.0NM	FRNG WILL TAKE PLACE AREA 6.5 KM SE EUTHAL, 470325N0085236E 470255N0085316E 465955N0085126E 465955N0085016E 470315N0085016E 470325N0085106E 470325N0085236E (470140N0085126E RADIUS 2.0NM).
LSD12 W0003/26	0700 - 1100 1200 - 2100	GND	3000m / 9850ft	470140N 0085126E	3.6KM / 2.0NM	D-AREA LSD12 SIHLTAL ACT.
LSR39B W0055/26	0800 - 1000 1300 - 1500	2750m / 9000ft	FL130	465352N 0082513E	10.1KM / 5.5NM	R-AREA LSR39B BRISEN ACT. LOWER LIMIT 9000FT AMSL OR 2000FT GND WHICHEVER IS HIGHER.
LSR39C W0056/26	0800 - 1000 1300 - 1500	2750m / 9000ft	FL130	465652N 0084033E	14.2KM / 7.7NM	R-AREA LSR39C STOOS ACT. LOWER LIMIT 9000FT AMSL OR 2000FT GND WHICHEVER IS HIGHER.
! LSR59 W0066/26	1200 - 1700	GND	4700m / 15500ft	465304N 0090543E	2.8KM / 1.5NM	R-AREA LSR59 WICHLEN ACT DUE TO FRNG.

Activities not shown on the DABS Chart Side:

NOTAM-Nr	Validity UTC	Lower Limit (m/ft AMSL or FL)	Upper Limit (m/ft AMSL or FL)	Center Point	Covering Radius	NOTAM Item E
W3449/25	0712 - 1606	GND	650m / 2150ft	471026N 0092955E	6.1KM / 3.3NM	UNMANNED ACFT ACT WILL TAKE PLACE OVER RHINE VALLEY BTN BUCHS, VADUZ, SEVELEN AND ESCHEN, RADIUS 6.0KM (471026N0092955E RADIUS 3.3NM). FOR INFO AND POSS COOR CTC +385 91 956 5459 OR ROUTES(A)JEDSY.COM

For detailed information regarding the DABS see AIP Switzerland GEN 3.1-5 or VFR GEN 1-0-4.

! New or changed data regarding an earlier version of the DABS.