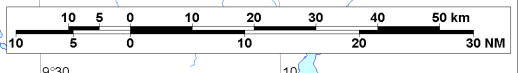
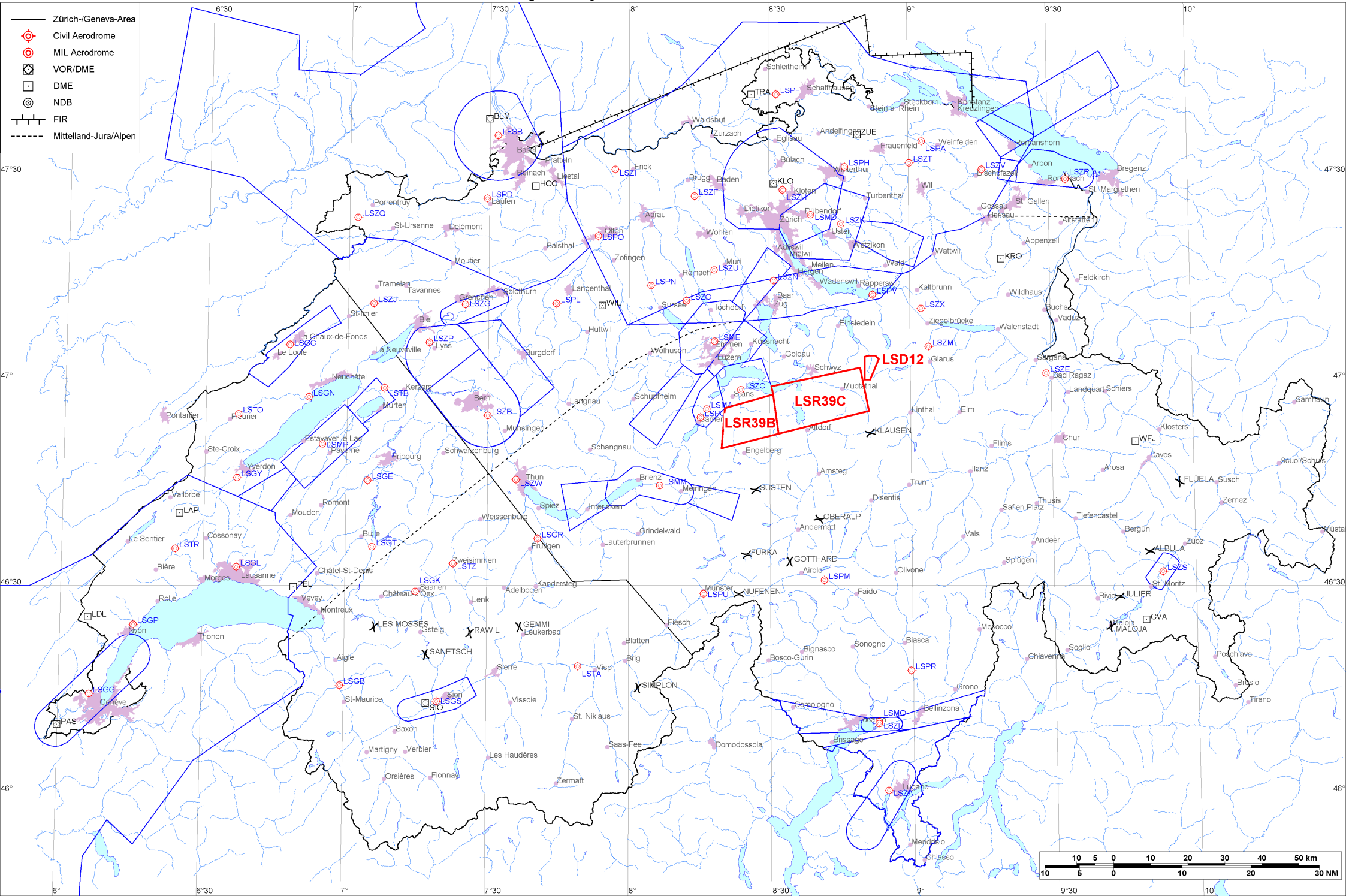


- Zürich-/Geneva-Area
- ⊕ Civil Aerodrome
- ⊙ MIL Aerodrome
- ⊠ VOR/DME
- DME
- ⊙ NDB
- ⊢ FIR
- - - - - Mittelland-Jura/Alpen





Firings / AIP-Areas / Warnings:

Firing-Nr AIP-Area NOTAM-Nr	Validity UTC	Lower Limit (m/ft AMSL or FL)	Upper Limit (m/ft AMSL or FL)	Center Point	Covering Radius	NOTAM Item E
! LSD12 W2443/24	1200 - 1700	GND	3000m / 9850ft	470140N 0085126E	3.6KM / 2.0NM	D-AREA LSD12 SIHTAL ACT.
! LSR39B W4007/25	1300 - 1500	2750m / 9000ft	FL130	465352N 0082513E	10.1KM / 5.5NM	R-AREA LSR39B BRISEN ACT. LOWER LIMIT 9000FT AMSL OR 2000FT GND WHICHEVER IS HIGHER.
! LSR39C W4008/25	1300 - 1500	2750m / 9000ft	FL130	465652N 0084033E	14.2KM / 7.7NM	R-AREA LSR39C STOOS ACT. LOWER LIMIT 9000FT AMSL OR 2000FT GND WHICHEVER IS HIGHER.

Activities not shown on the DABS Chart Side:

NOTAM-Nr	Validity UTC	Lower Limit (m/ft AMSL or FL)	Upper Limit (m/ft AMSL or FL)	Center Point	Covering Radius	NOTAM Item E
W3449/25	0706 - 1541	GND	650m / 2150ft	471026N 0092955E	6.1KM / 3.3NM	UNMANNED ACFT ACT WILL TAKE PLACE OVER RHINE VALLEY BTN BUCHS, VADUZ, SEVELEN AND ESCHEN, RADIUS 6.0KM (471026N0092955E RADIUS 3.3NM). FOR INFO AND POSS COOR CTC +385 91 956 5459 OR ROUTES(A)JEDSY.COM

For detailed information regarding the DABS see AIP Switzerland GEN 3.1-5 or VFR GEN 1-0-4.

! New or changed data regarding an earlier version of the DABS.