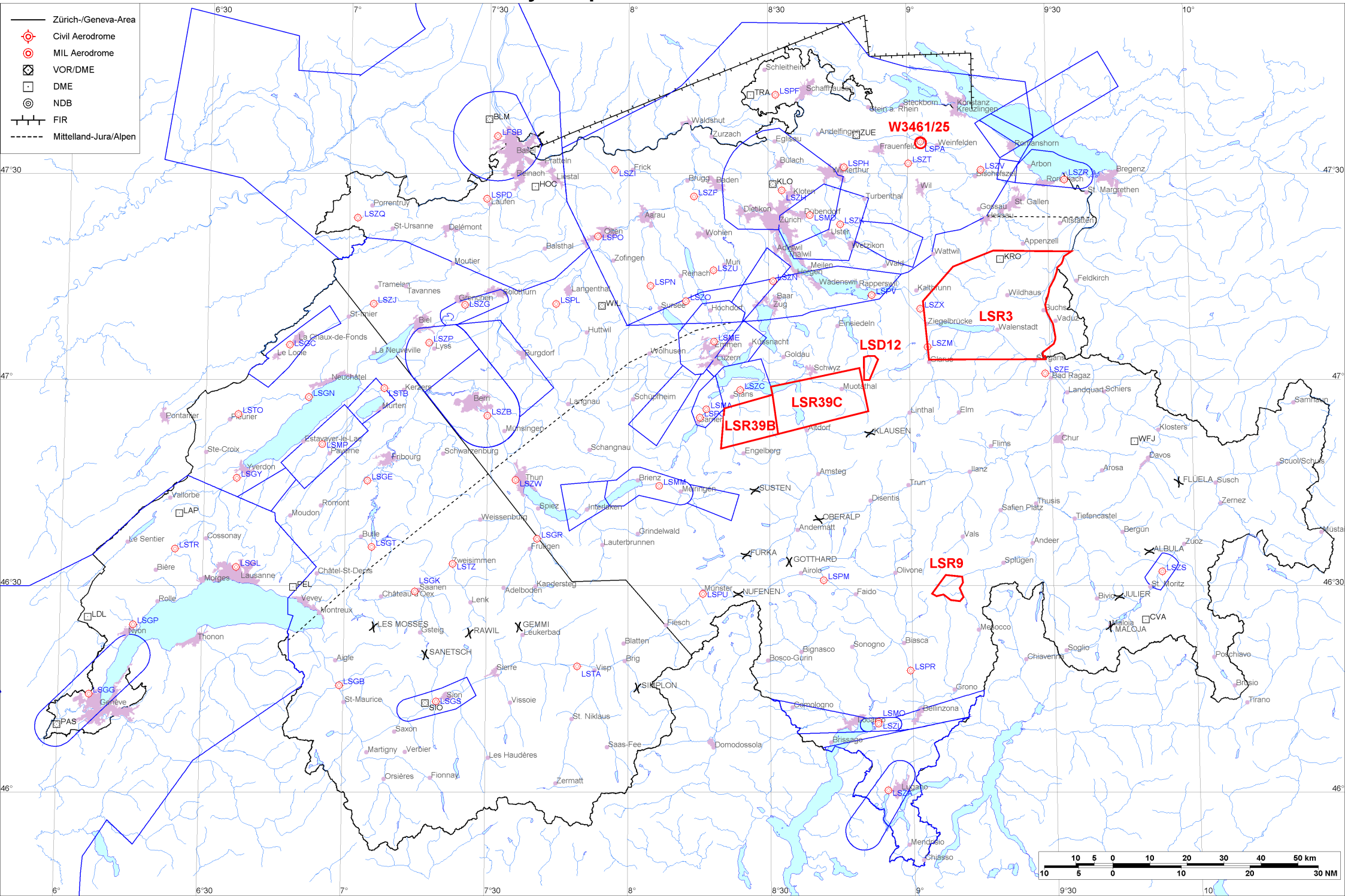


- Zürich-/Geneva-Area
- ⊕ Civil Aerodrome
- ⊙ MIL Aerodrome
- ⊠ VOR/DME
- DME
- ⊙ NDB
- FIR
- - - - - Mittelland-Jura/Alpen





Firings / AIP-Areas / Warnings:

Firing-Nr AIP-Area NOTAM-Nr	Validity UTC	Lower Limit (m/ft AMSL or FL)	Upper Limit (m/ft AMSL or FL)	Center Point	Covering Radius	NOTAM Item E
LSD12 W2443/24	0700 - 1100 1200 - 1700	GND	3000m / 9850ft	470140N 0085126E	3.6KM / 2.0NM	D-AREA LSD12 SIHLTAL ACT.
LSR3 W3891/25	0750 - 0830 0950 - 1030	FL100	FL130	471047N 0091932E	24.4KM / 13.2NM	R-AREA LSR3 SPEER ACT.
LSR9 W3866/25	0700 - 1600	GND	4700m / 15500ft	462943N 0090743E	4.8KM / 2.6NM	R-AREA LSR9 HINTERRHEIN ACT DUE TO FRNG.
LSR39B W3881/25	0800 - 1000 1300 - 1500	2750m / 9000ft	FL130	465352N 0082513E	10.1KM / 5.5NM	R-AREA LSR39B BRISEN ACT. LOWER LIMIT 9000FT AMSL OR 2000FT GND WHICHEVER IS HIGHER.
LSR39C W3882/25	0800 - 1000 1300 - 1500	2750m / 9000ft	FL130	465652N 0084033E	14.2KM / 7.7NM	R-AREA LSR39C STOOS ACT. LOWER LIMIT 9000FT AMSL OR 2000FT GND WHICHEVER IS HIGHER.
W3461/25	0000 - 0400	GND	FL195	473426N 0090252E	0.3KM / 0.2NM	TEMPO R-AREA AMLIKON ESTABLISHED RADIUS 0.2KM (473426N0090252E RADIUS 0.2NM). WX MEASUREMENTS BY REMOTELY PILOTED AERIAL SYSTEM WILL TAKE PLACE. WHITE BLINKING PSN LGT WITH VISUAL RANGE OF AT LEAST 3KM. ENTRY PROHIBITED WHEN ACT EXC HEL EMERG MEDICAL SER (HEMS). FOR INFO ON ACT AND HEMS CTC TEL +41 79 772 93 32 / +41 79 596 93 33.

Activities not shown on the DABS Chart Side:

NOTAM-Nr	Validity UTC	Lower Limit (m/ft AMSL or FL)	Upper Limit (m/ft AMSL or FL)	Center Point	Covering Radius	NOTAM Item E
W3449/25	0651 - 1544	GND	650m / 2150ft	471026N 0092955E	6.1KM / 3.3NM	UNMANNED ACFT ACT WILL TAKE PLACE OVER RHINE VALLEY BTN BUCHS, VADUZ, SEVELEN AND ESCHEN, RADIUS 6.0KM (471026N0092955E RADIUS 3.3NM). FOR INFO AND POSS COOR CTC +385 91 956 5459 OR ROUTES(A)JEDSY.COM

For detailed information regarding the DABS see AIP Switzerland GEN 3.1-5 or VFR GEN 1-0-4.