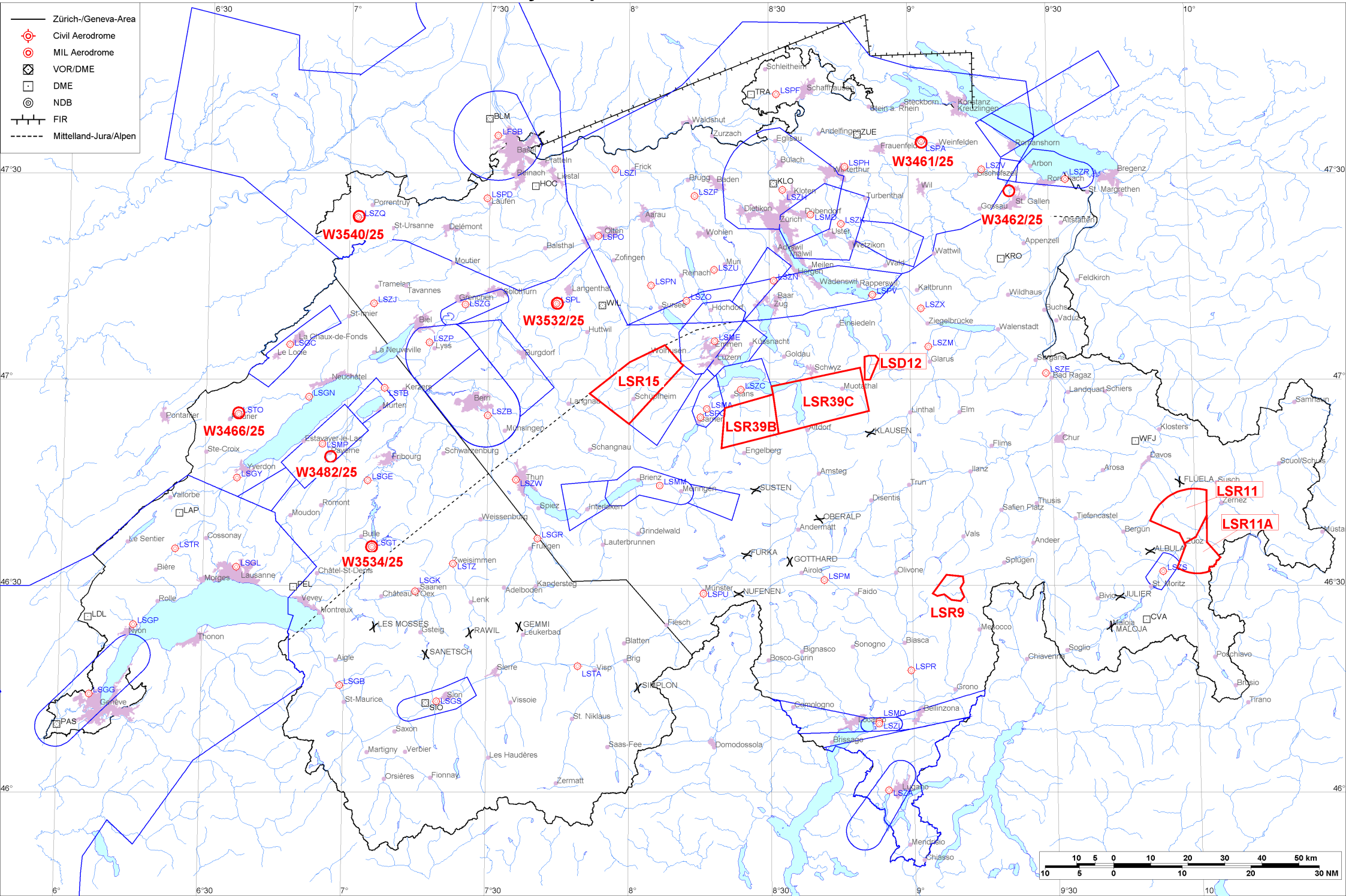


- Zürich-/Geneva-Area
- ⊕ Civil Aerodrome
- ⊙ MIL Aerodrome
- ⊠ VOR/DME
- DME
- ⊙ NDB
- FIR
- - - - - Mittelland-Jura/Alpen





Firings / AIP-Areas / Warnings:

Firing-Nr AIP-Area NOTAM-Nr	Validity UTC	Lower Limit (m/ft AMSL or FL)	Upper Limit (m/ft AMSL or FL)	Center Point	Covering Radius	NOTAM Item E
LSD12 W2442/24	0700 - 1100 1200 - 2100	GND	3000m / 9850ft	470140N 0085126E	3.6KM / 2.0NM	D-AREA LSD12 SIHLTAL ACT.
LSR9 W2814/25	0700 - 2100	GND	12050m / 39500ft	462943N 0090743E	4.8KM / 2.6NM	R-AREA LSR9 HINTERRHEIN ACT DUE TO FRNG.
LSR11 W2183/25	0800 - 1600 1800 - 2000	GND	9600m / 31500ft	464054N 0095706E	8.9KM / 4.8NM	R-AREA LSR11 S-CHANF ACT.
LSR11A W2186/25	0800 - 1600 1800 - 2000	2150m / 7000ft	9600m / 31500ft	463605N 0095959E	8.3KM / 4.5NM	R-AREA LSR11A S-CHANF ACT.
! LSR15 W3542/25	1300 - 1600	1700m / 5500ft	FL100	465958N 0080137E	13.3KM / 7.2NM	R-AREA LSR15 ENTLEBUCH ACT. !
LSR39B W3536/25	0800 - 1000 1300 - 1500	2750m / 9000ft	FL130	465352N 0082513E	10.1KM / 5.5NM	R-AREA LSR39B BRISEN ACT. LOWER LIMIT 9000FT AMSL OR 2000FT GND WHICHEVER IS HIGHER.
LSR39C W3537/25	0800 - 1000 1300 - 1500	2750m / 9000ft	FL130	465652N 0084033E	14.2KM / 7.7NM	R-AREA LSR39C STOOS ACT. LOWER LIMIT 9000FT AMSL OR 2000FT GND WHICHEVER IS HIGHER.
! W3461/25	2230 - 2359	GND	FL195	473426N 0090252E	0.3KM / 0.2NM	TEMPO R-AREA AMLIKON ESTABLISHED RADIUS 0.2KM (473426N0090252E RADIUS 0.2NM). WX MEASUREMENTS BY REMOTELY PILOTED AERIAL SYSTEM WILL TAKE PLACE. WHITE BLINKING PSN LGT WITH VISUAL RANGE OF AT LEAST 3KM. ENTRY PROHIBITED WHEN ACT EXC HEL EMERG MEDICAL SER (HEMS). FOR INFO ON ACT AND HEMS CTC TEL +41 79 772 93 32 / +41 79 596 93 33. !
! W3462/25	2100 - 2359	GND	1200m / 4000ft	472723N 0092137E	0.3KM / 0.2NM	TEMPO D-AREA WITTENBACH ESTABLISHED 2.3KM WSW WITTENBACH, RADIUS 0.2KM (472723N0092137E RADIUS 0.2NM). WI AIRSPACE GOLF ONLY. WX MEASUREMENTS BY REMOTELY PILOTED AERIAL SYSTEM WILL TAKE PLACE. WHITE BLINKING PSN LGT WITH VISUAL RANGE OF AT LEAST 3KM. FOR INFO ON ACT AND HEL EMERG MEDICAL SER (HEMS) CTC TEL +41 79 772 93 32 / +41 79 596 93 33. !
! W3466/25	2100 - 2359	GND	FL100	465506N 0063657E	0.3KM / 0.2NM	TEMPO D-AREA MOTIERS ESTABLISHED, RADIUS 0.2KM (465506N0063657E RADIUS 0.2NM). WX MEASUREMENTS BY REMOTELY PILOTED AERIAL SYSTEM WILL TAKE PLACE. WHITE BLINKING POSITION LGT WITH VISUAL RANGE OF AT LEAST 3KM. FOR INFO ON ACT AND HEL EMERG MEDICAL SER (HEMS) CTC TEL +41 79 772 93 32 / +41 79 596 93 33. !
! W3482/25	2100 - 2359	GND	FL100	464845N 0065639E	0.6KM / 0.4NM	TEMPO D-AREA PAYERNE ESTABLISHED 4.1KM SSE PAYERNE AD, RADIUS 0.6KM (464845N0065639E RADIUS 0.4NM). WX MEASUREMENTS BY REMOTELY PILOTED AERIAL SYSTEM WILL TAKE PLACE. WHITE BLINKING PSN LGT WITH VISUAL RANGE OF AT LEAST 3KM. FOR INFO ON ACT AND HEL EMERG MEDICAL SER (HEMS) CTC TEL +41 79 772 93 32 OR +41 79 596 93 33. !



Firing-Nr AIP-Area NOTAM-Nr	Validity UTC	Lower Limit (m/ft AMSL or FL)	Upper Limit (m/ft AMSL or FL)	Center Point	Covering Radius	NOTAM Item E
! W3532/25	2100 - 2359	GND	FL100	471100N 0074438E	0.3KM / 0.2NM	TEMPO D-AREA LANGENTHAL ESTABLISHED, RADIUS 0.2KM (471100N0074438E RADIUS 0.2NM). WX MEASUREMENTS BY REMOTELY PILOTED AERIAL SYSTEM WILL TAKE PLACE. WHITE BLINKING PSN LGT WITH VISUAL RANGE OF AT LEAST 3KM. FOR INFO ON ACT AND HEL EMERG MEDICAL SER (HEMS) CTC TEL +41 79 772 93 32 OR +41 79 596 93 33.
! W3534/25	2100 - 2359	GND	FL100	463539N 0070537E	0.3KM / 0.2NM	TEMPO D-AREA GRUYERES ESTABLISHED, RADIUS 0.2KM (463539N0070537E RADIUS 0.2NM). WX MEASUREMENTS BY REMOTELY PILOTED AERIAL SYSTEM WILL TAKE PLACE. WHITE BLINKING PSN LGT WITH VISUAL RANGE OF AT LEAST 3KM. FOR INFO ON ACT AND HEL EMERG MEDICAL SER (HEMS) CTC TEL +41 79 772 93 32 OR +41 79 596 93 33.
! W3540/25	2100 - 2359	GND	FL100	472339N 0070159E	0.3KM / 0.2NM	TEMPO D-AREA BRESSAUCOURT ESTABLISHED, RADIUS 0.2KM (472339N0070159E RADIUS 0.2NM). WX MEASUREMENTS BY REMOTELY PILOTED AERIAL SYSTEM WILL TAKE PLACE. WHITE BLINKING PSN LGT WITH VISUAL RANGE OF AT LEAST 3KM. FOR INFO ON ACT AND HEL EMERG MEDICAL SER (HEMS) CTC TEL +41 79 772 93 32 OR +41 79 596 93 33.

Activities not shown on the DABS Chart Side:

NOTAM-Nr	Validity UTC	Lower Limit (m/ft AMSL or FL)	Upper Limit (m/ft AMSL or FL)	Center Point	Covering Radius	NOTAM Item E
W3423/25	0600 - 1700	GND	650m / 2200ft	464955N 0073115E	2.0KM / 1.1NM	MODEL FLYING WILL TAKE PLACE 3.9KM SE TOFFEN, RADIUS 2.0KM (464955N0073115E RADIUS 1.1NM). DUE TO CHAMPIONSHIP.
W3449/25	0610 - 1617	GND	650m / 2150ft	471026N 0092955E	6.1KM / 3.3NM	UNMANNED ACFT ACT WILL TAKE PLACE OVER RHINE VALLEY BTN BUCHS, VADUZ, SEVELEN AND ESCHEN, RADIUS 6.0KM (471026N0092955E RADIUS 3.3NM). FOR INFO AND POSS COOR CTC +385 91 956 5459 OR ROUTES(A)JEDSY.COM

For detailed information regarding the DABS see AIP Switzerland GEN 3.1-5 or VFR GEN 1-0-4.

! New or changed data regarding an earlier version of the DABS.