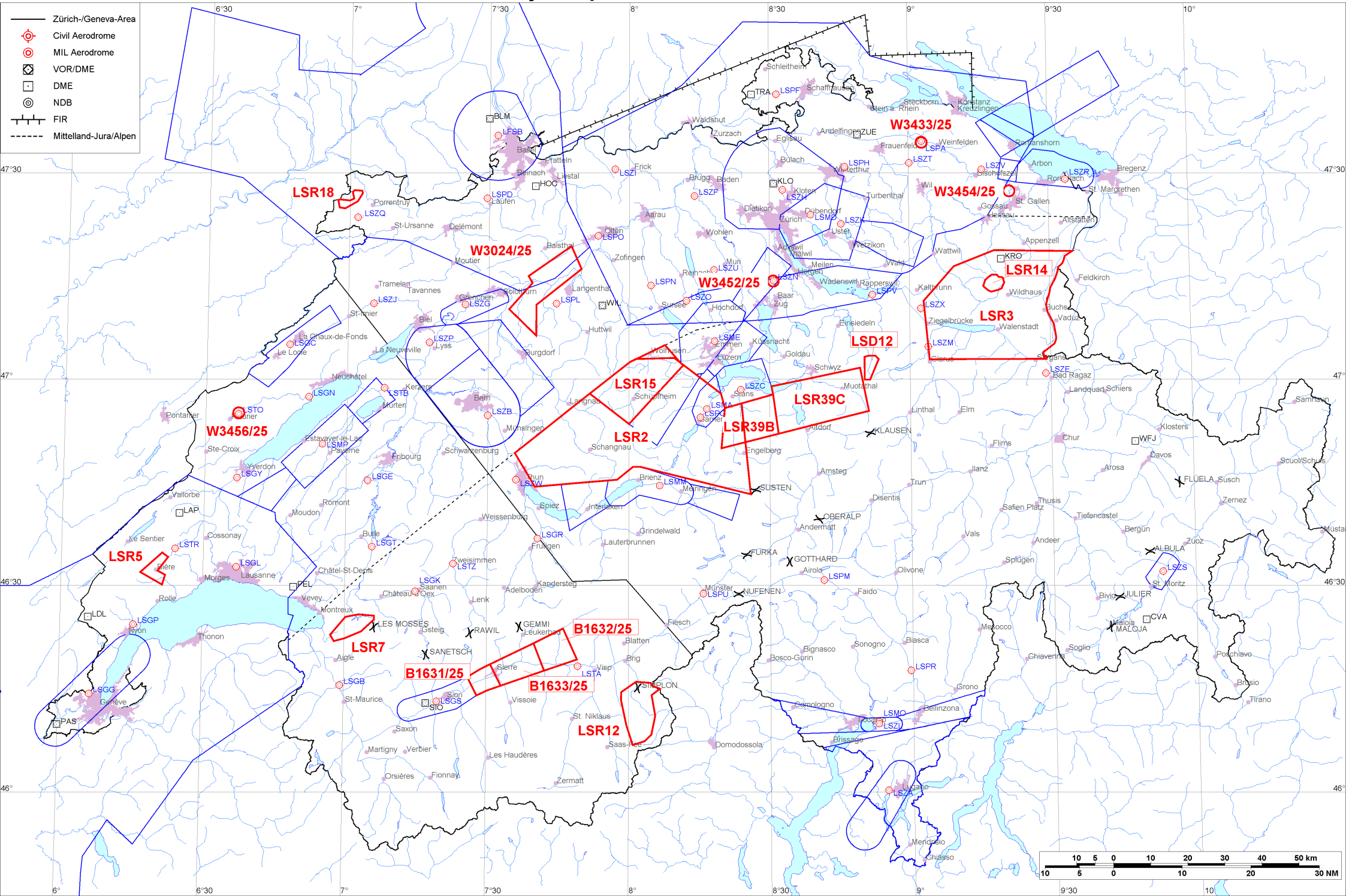


- Zürich-/Geneva-Area
- ⊙ Civil Aerodrome
- ⊙ MIL Aerodrome
- ⊠ VOR/DME
- DME
- ⊙ NDB
- FIR
- - - - - Mittelland-Jura/Alpen





Firings / AIP-Areas / Warnings:

Firing-Nr AIP-Area NOTAM-Nr	Validity UTC	Lower Limit (m/ft AMSL or FL)	Upper Limit (m/ft AMSL or FL)	Center Point	Covering Radius	NOTAM Item E
LSD12 W2442/24	0600 - 1000 1100 - 2100	GND	3000m / 9850ft	470140N 0085126E	3.6KM / 2.0NM	D-AREA LSD12 SIHTAL ACT.
LSR2 W3467/25	1140 - 1220	FL100	FL130	464812N 0080120E	32.6KM / 17.6NM	R-AREA LSR2 HOHGANT ACT.
LSR3 W3468/25	1345 - 1425	FL100	FL130	471047N 0091932E	24.4KM / 13.2NM	R-AREA LSR3 SPEER ACT.
LSR5 W3439/25	0600 - 1600	GND	1700m / 5500ft	463227N 0062016E	4.6KM / 2.5NM	R-AREA LSR5 BIERE ACT DUE TO MIL UAV.
LSR7 W3417/25	0530 - 2100	GND	4700m / 15500ft	462408N 0070145E	6.5KM / 3.5NM	R-AREA LSR7 HONGRIN ACT DUE TO FRNG.
LSR12 W3460/25	0700 - 2000	GND	6850m / 22500ft	461121N 0080238E	8.7KM / 4.7NM	R-AREA LSR12 SIMPLON ACT DUE TO FRNG.
LSR14 W3431/25	0530 - 2100	GND	3800m / 12500ft	471401N 0091801E	2.9KM / 1.6NM	R-AREA LSR14 SANTIS ACT DUE TO FRNG.
LSR15 W3448/25	1600 - 1715	1700m / 5500ft	FL100	465958N 0080137E	13.3KM / 7.2NM	R-AREA LSR15 ENTLEBUCH ACT.
LSR18 W3386/25	0600 - 2000	GND	1350m / 4500ft	472612N 0070011E	3.8KM / 2.1NM	R-AREA LSR18 BURE ACT DUE TO MIL UAV ACT.
LSR39B W3457/25	0700 - 0900 1200 - 1400	2750m / 9000ft	FL130	465352N 0082513E	10.1KM / 5.5NM	R-AREA LSR39B BRISEN ACT. LOWER LIMIT 9000FT AMSL OR 2000FT GND WHICHEVER IS HIGHER.
LSR39C W3458/25	0700 - 0900 1200 - 1400	2750m / 9000ft	FL130	465652N 0084033E	14.2KM / 7.7NM	R-AREA LSR39C STOOS ACT. LOWER LIMIT 9000FT AMSL OR 2000FT GND WHICHEVER IS HIGHER.
B1631/25	0530 - 1005 1115 - 1505	900m / 3000ft	FL130	461610N 0072940E	4.7KM / 2.6NM	SION TEMPO MIL TMA SECT 1 ACT.
B1632/25	0530 - 1005 1115 - 1505	3050m / 10000ft	FL130	462031N 0074437E	6.4KM / 3.5NM	SION TEMPO MIL TMA SECT 3 ACT.
B1633/25	0530 - 1005 1115 - 1505	1850m / 6000ft	FL130	461821N 0073637E	7.4KM / 4.0NM	SION TEMPO MIL TMA SECT 2 ACT.



Firing-Nr AIP-Area NOTAM-Nr	Validity UTC	Lower Limit (m/ft AMSL or FL)	Upper Limit (m/ft AMSL or FL)	Center Point	Covering Radius	NOTAM Item E
W3024/25	0630 - 0715 0800 - 0845 1130 - 1215 1345 - 1430	GND	900m / 3000ft	471252N 0074347E	13.0KM / 7.0NM	TEMPO D-AREA NIEDERBIPP ESTABLISHED WI AREA: 471500N0073830E 471920N0074740E 471600N0074950E 471050N0074010E 470620N0074010E 471010N0073420E 471400N0073920E 471500N0073830E (471252N0074347E RADIUS 7.0NM).DUE TO MIL AERIAL TARGET FLT. CROSSING TFC RECOMMENDED TO MNT AND BLIND TRANSMIT PSN, ALT, AND RTE ON 122.315.
W3433/25	0000 - 0300 2130 - 2359	GND	FL195	473426N 0090252E	0.3KM / 0.2NM	TEMPO R-AREA AMLIKON ESTABLISHED RADIUS 0.2KM (473426N0090252E RADIUS 0.2NM). WX MEASUREMENTS BY REMOTELY PILOTED AERIAL SYSTEM WILL TAKE PLACE. WHITE BLINKING PSN LGT WITH VISUAL RANGE OF AT LEAST 3KM. ENTRY PROHIBITED WHEN ACT EXC HEL EMERG MEDICAL SER (HEMS). FOR INFO ON ACT AND HEMS CTC TEL +41 79 772 93 32 / +41 79 596 93 33.
W3452/25	0000 - 0330 2200 - 2359	GND	FL090	471416N 0083051E	0.3KM / 0.2NM	TEMPO D-AREA HAUSEN AM ALBIS ESTABLISHED, RADIUS 0.2KM (471416N0083051E RADIUS 0.2NM). WX MEASUREMENTS BY REMOTELY PILOTED AERIAL SYSTEM WILL TAKE PLACE. WHITE BLINKING PSN LGT WITH VISUAL RANGE OF AT LEAST 3KM. FOR INFO ON ACT AND HEL EMERG MEDICAL SER (HEMS) CTC TEL +41 79 772 93 32 / +41 79 596 93 33.
W3454/25	0000 - 0400 2000 - 2359	GND	1200m / 4000ft	472723N 0092137E	0.3KM / 0.2NM	TEMPO D-AREA WITTENBACH ESTABLISHED 2.3KM WSW WITTENBACH, RADIUS 0.2KM (472723N0092137E RADIUS 0.2NM). WI AIRSPACE GOLF ONLY. WX MEASUREMENTS BY REMOTELY PILOTED AERIAL SYSTEM WILL TAKE PLACE. WHITE BLINKING PSN LGT WITH VISUAL RANGE OF AT LEAST 3KM. FOR INFO ON ACT AND HEL EMERG MEDICAL SER (HEMS) CTC TEL +41 79 772 93 32 / +41 79 596 93 33.
W3456/25	0000 - 0400 2000 - 2359	GND	FL100	465506N 0063657E	0.3KM / 0.2NM	TEMPO D-AREA MOTIERS ESTABLISHED, RADIUS 0.2KM (465506N0063657E RADIUS 0.2NM). WX MEASUREMENTS BY REMOTELY PILOTED AERIAL SYSTEM WILL TAKE PLACE. WHITE BLINKING PSN LGT WITH VISUAL RANGE OF AT LEAST 3KM. FOR INFO ON ACT AND HEL EMERG MEDICAL SER (HEMS) CTC TEL +41 79 772 93 32 / +41 79 596 93 33.

Activities not shown on the DABS Chart Side:

NOTAM-Nr	Validity UTC	Lower Limit (m/ft AMSL or FL)	Upper Limit (m/ft AMSL or FL)	Center Point	Covering Radius	NOTAM Item E
W3449/25	0558 - 1630	GND	650m / 2150ft	471026N 0092955E	6.1KM / 3.3NM	UNMANNED ACFT ACT WILL TAKE PLACE OVER RHINE VALLEY BTN BUCHS, VADUZ, SEVELEN AND ESCHEN, RADIUS 6.0KM (471026N0092955E RADIUS 3.3NM). FOR INFO AND POSS COOR CTC +385 91 956 5459 OR ROUTES(A)JEDSY.COM

For detailed information regarding the DABS see AIP Switzerland GEN 3.1-5 or VFR GEN 1-0-4.