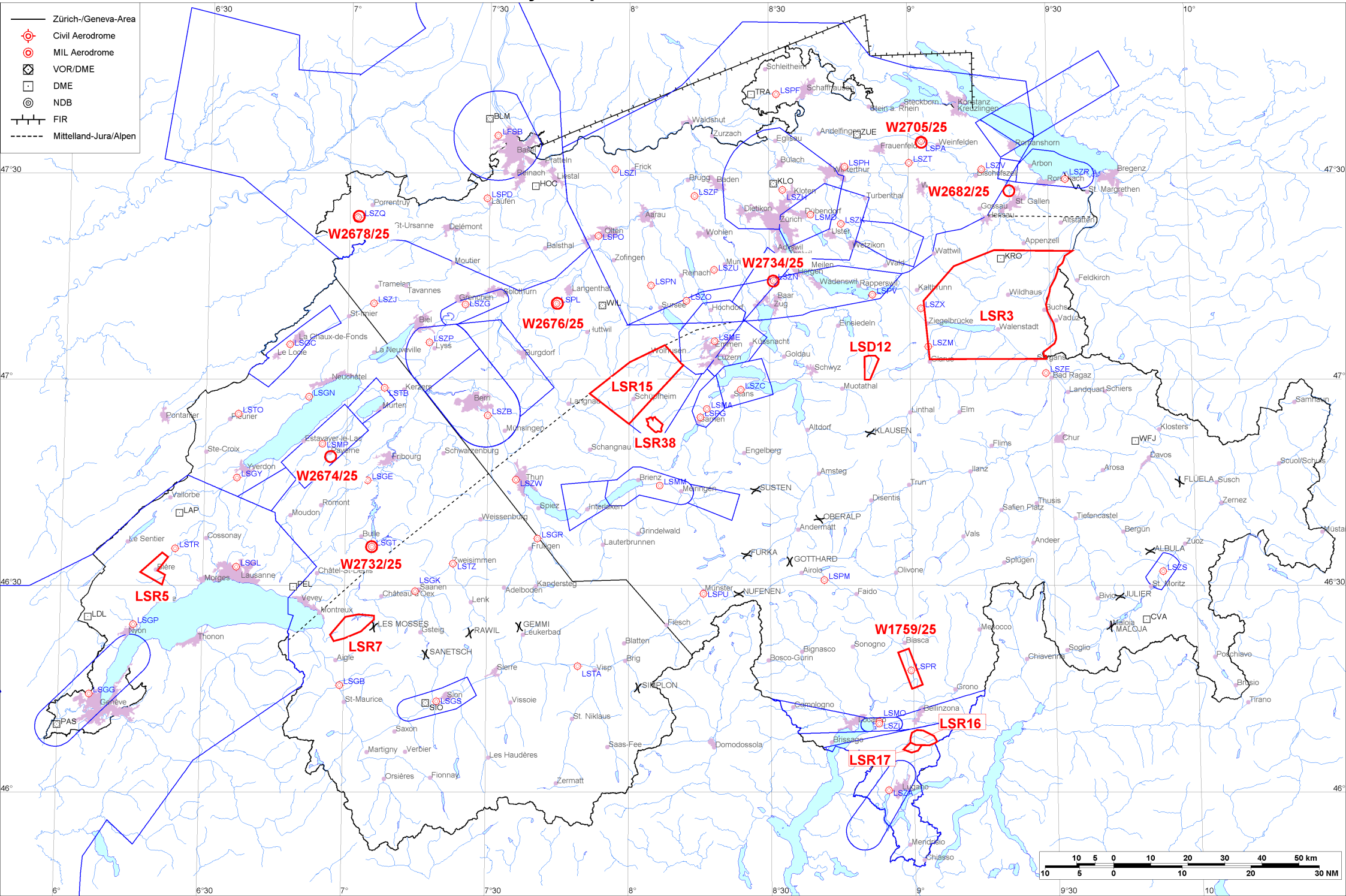


- Zürich-/Geneva-Area
- ⊙ Civil Aerodrome
- ⊙ MIL Aerodrome
- ⊠ VOR/DME
- DME
- ⊙ NDB
- FIR
- - - - - Mittelland-Jura/Alpen





Firings / AIP-Areas / Warnings:

Firing-Nr AIP-Area NOTAM-Nr	Validity UTC	Lower Limit (m/ft AMSL or FL)	Upper Limit (m/ft AMSL or FL)	Center Point	Covering Radius	NOTAM Item E
LSD12 W2441/24	0600 - 1000 1100 - 2100	GND	1800m / 5900ft	470140N 0085126E	3.6KM / 2.0NM	D-AREA LSD12 SIHLTAL ACT.
LSR3 W2741/25	1340 - 1420	FL100	FL130	471047N 0091932E	24.4KM / 13.2NM	R-AREA LSR3 SPEER ACT.
LSR5 W2600/25	0600 - 1600	GND	1700m / 5500ft	463227N 0062016E	4.6KM / 2.5NM	R-AREA LSR5 BIERE ACT DUE TO MIL UAV.
LSR5 W2708/25	1100 - 1600	GND	2000m / 6500ft	463227N 0062016E	4.6KM / 2.5NM	R-AREA LSR5 BIERE ACT DUE TO FRNG.
LSR7 W2726/25	0530 - 2100	GND	4700m / 15500ft	462408N 0070145E	6.5KM / 3.5NM	R-AREA LSR7 HONGRIN ACT DUE TO FRNG.
LSR15 W2743/25	0700 - 1000 1100 - 1500	1700m / 5500ft	FL100	465958N 0080137E	13.3KM / 7.2NM	R-AREA LSR15 ENTLEBUCH ACT.
LSR16 W2583/25	0500 - 2100	GND	2600m / 8500ft	460736N 0090200E	3.7KM / 2.0NM	R-AREA LSR16 ISONE 1 ACT DUE TO MIL UAV.
LSR17 W2585/25	0500 - 2100	GND	2600m / 8500ft	460628N 0085940E	2.6KM / 1.4NM	R-AREA LSR17 ISONE 2 ACT DUE TO MIL UAV.
LSR38 W2736/25	0700 - 2100	GND	5350m / 17500ft	465317N 0080519E	2.6KM / 1.4NM	R-AREA LSR38 GLAUBENBERG-WASSERFALLEN ACT DUE TO FRNG.
W1759/25	0600 - 1000 1115 - 1500	GND	1850m / 6000ft	461755N 0085923E	5.5KM / 3.0NM	TEMPO D-AREA LODRINO ESTABLISHED DUE TO INTENSE MIL PC7 TFC WI AREA 461500N0085940E 462015N0085650E 462050N0085905E 461535N0090155E 461500N0085940E (461755N0085923E RADIUS 3.0NM). INFO AVBL ON 119.625.
W2674/25	0000 - 0400 2100 - 2359	GND	FL100	464845N 0065639E	0.6KM / 0.4NM	TEMPO D-AREA PAYERNE ESTABLISHED 4.1KM SSE PAYERNE AD, RADIUS 0.6KM (464845N0065639E RADIUS 0.4NM). WX MEASUREMENTS BY REMOTELY PILOTED AERIAL SYSTEM WILL TAKE PLACE. WHITE BLINKING PSN LGT WITH VISUAL RANGE OF AT LEAST 3KM. FOR INFO ON ACT AND HEL EMERG MEDICAL SER (HEMS) CTC TEL +41 79 772 93 32 OR +41 79 596 93 33.
W2676/25	0000 - 0400 2000 - 2359	GND	FL100	471100N 0074438E	0.3KM / 0.2NM	TEMPO D-AREA LANGENTHAL ESTABLISHED, RADIUS 0.2KM (471100N0074438E RADIUS 0.2NM). WX MEASUREMENTS BY REMOTELY PILOTED AERIAL SYSTEM WILL TAKE PLACE. WHITE BLINKING PSN LGT WITH VISUAL RANGE OF AT LEAST 3KM. FOR INFO ON ACT AND HEL EMERG MEDICAL SER (HEMS) CTC TEL +41 79 772 93 32 OR +41 79 596 93 33.



Firing-Nr AIP-Area NOTAM-Nr	Validity UTC	Lower Limit (m/ft AMSL or FL)	Upper Limit (m/ft AMSL or FL)	Center Point	Covering Radius	NOTAM Item E
W2678/25	0000 - 0400 2000 - 2359	GND	FL100	472339N 0070159E	0.3KM / 0.2NM	TEMPO D-AREA BRESSAUCOURT ESTABLISHED, RADIUS 0.2KM (472339N0070159E RADIUS 0.2NM). WX MEASUREMENTS BY REMOTELY PILOTED AERIAL SYSTEM WILL TAKE PLACE. WHITE BLINKING PSN LGT WITH VISUAL RANGE OF AT LEAST 3KM. FOR INFO ON ACT AND HEL EMERG MEDICAL SER (HEMS) CTC TEL +41 79 772 93 32 / +41 79 596 93 33.
W2682/25	0000 - 0400 2000 - 2359	GND	1200m / 4000ft	472723N 0092137E	0.3KM / 0.2NM	TEMPO D-AREA WITTENBACH ESTABLISHED 2.3KM WSW WITTENBACH, RADIUS 0.2KM (472723N0092137E RADIUS 0.2NM). WI AIRSPACE GOLF ONLY. WX MEASUREMENTS BY REMOTELY PILOTED AERIAL SYSTEM WILL TAKE PLACE. WHITE BLINKING PSN LGT WITH VISUAL RANGE OF AT LEAST 3KM. FOR INFO ON ACT AND HEL EMERG MEDICAL SER (HEMS) CTC TEL +41 79 772 93 32 OR +41 79 596 93 33.
W2705/25	0000 - 0300 2130 - 2359	GND	FL195	473426N 0090252E	0.3KM / 0.2NM	TEMPO R-AREA AMLIKON ESTABLISHED RADIUS 0.2KM (473426N0090252E RADIUS 0.2NM). WX MEASUREMENTS BY REMOTELY PILOTED AERIAL SYSTEM WILL TAKE PLACE. WHITE BLINKING PSN LGT WITH VISUAL RANGE OF AT LEAST 3KM. ENTRY PROHIBITED WHEN ACT EXC HEL EMERG MEDICAL SER (HEMS). FOR INFO ON ACT AND HEMS CTC TEL +41 79 772 93 32 OR +41 79 596 93 33.
W2732/25	0000 - 0400 2000 - 2359	GND	FL100	463539N 0070537E	0.3KM / 0.2NM	TEMPO D-AREA GRUYERES ESTABLISHED, RADIUS 0.2KM (463539N0070537E RADIUS 0.2NM). WX MEASUREMENTS BY REMOTELY PILOTED AERIAL SYSTEM WILL TAKE PLACE. WHITE BLINKING PSN LGT WITH VISUAL RANGE OF AT LEAST 3KM. FOR INFO ON ACT AND HEL EMERG MEDICAL SER (HEMS) CTC TEL +41 79 772 93 32 OR +41 79 596 93 33.
W2734/25	0000 - 0330 2200 - 2359	GND	FL090	471416N 0083051E	0.3KM / 0.2NM	TEMPO D-AREA HAUSEN AM ALBIS ESTABLISHED, RADIUS 0.2KM (471416N0083051E RADIUS 0.2NM). WX MEASUREMENTS BY REMOTELY PILOTED AERIAL SYSTEM WILL TAKE PLACE. WHITE BLINKING PSN LGT WITH VISUAL RANGE OF AT LEAST 3KM. FOR INFO ON ACT AND HEL EMERG MEDICAL SER (HEMS) CTC TEL +41 79 772 93 32 OR +41 79 596 93 33.

Activities not shown on the DABS Chart Side:

NOTAM-Nr	Validity UTC	Lower Limit (m/ft AMSL or FL)	Upper Limit (m/ft AMSL or FL)	Center Point	Covering Radius	NOTAM Item E
None						

For detailed information regarding the DABS see AIP Switzerland GEN 3.1-5 or VFR GEN 1-0-4.