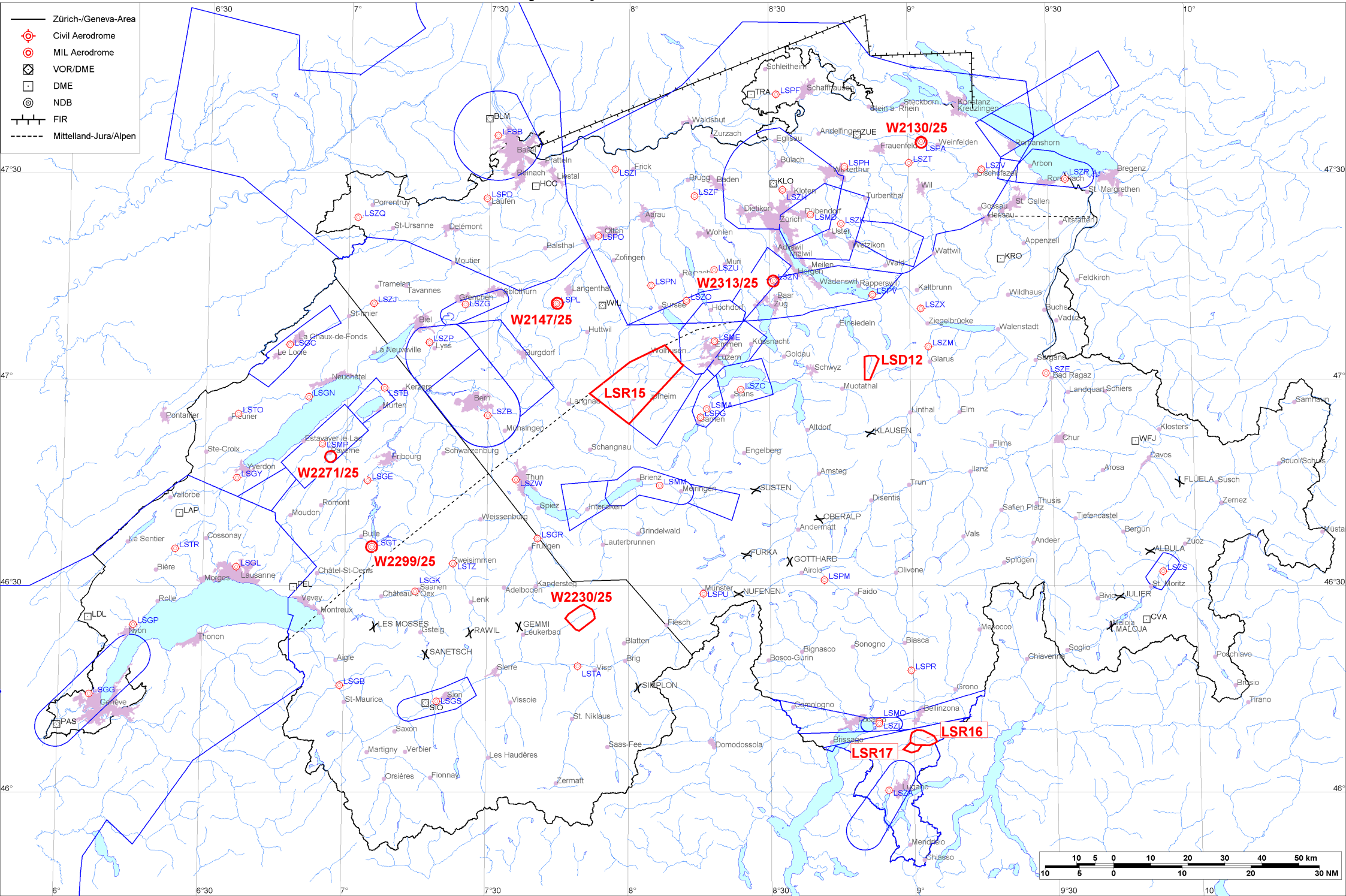


- Zürich-/Geneva-Area
- ⊙ Civil Aerodrome
- ⊙ MIL Aerodrome
- ⊠ VOR/DME
- DME
- ⊙ NDB
- FIR
- - - - - Mittelland-Jura/Alpen





Firings / AIP-Areas / Warnings:

Firing-Nr AIP-Area NOTAM-Nr	Validity UTC	Lower Limit (m/ft AMSL or FL)	Upper Limit (m/ft AMSL or FL)	Center Point	Covering Radius	NOTAM Item E
LSD12 W2440/24	0600 - 1000 1100 - 2100	GND	1800m / 5900ft	470140N 0085126E	3.6KM / 2.0NM	D-AREA LSD12 SIHTAL ACT.
LSR15 W2305/25	0700 - 1000 1200 - 1500	1700m / 5500ft	FL100	465958N 0080137E	13.3KM / 7.2NM	R-AREA LSR15 ENTLEBUCH ACT.
LSR16 W1940/25	0800 - 2000	GND	2600m / 8500ft	460736N 0090200E	3.7KM / 2.0NM	R-AREA LSR16 ISONE 1 ACT DUE TO MIL UAV.
LSR17 W1941/25	0800 - 2000	GND	2600m / 8500ft	460628N 0085940E	2.6KM / 1.4NM	R-AREA LSR17 ISONE 2 ACT DUE TO MIL UAV.
! W2130/25	2130 - 2359	GND	FL195	473426N 0090252E	0.3KM / 0.2NM	TEMPO R-AREA AMLIKON ESTABLISHED RADIUS 0.2KM (473426N0090252E RADIUS 0.2NM). WX MEASUREMENTS BY REMOTELY PILOTED AERIAL SYSTEM WILL TAKE PLACE. WHITE BLINKING PSN LGT WITH VISUAL RANGE OF AT LEAST 3KM. ENTRY PROHIBITED WHEN ACT EXC HEL EMERG MEDICAL SER (HEMS). FOR INFO ON ACT AND HEMS CTC TEL +41 79 772 93 32 OR TEL +41 79 596 93 33.
! W2147/25	2000 - 2359	GND	FL100	471100N 0074438E	0.3KM / 0.2NM	TEMPO D-AREA LANGENTHAL ESTABLISHED, RADIUS 0.2KM (471100N0074438E RADIUS 0.2NM). WX MEASUREMENTS BY REMOTELY PILOTED AERIAL SYSTEM WILL TAKE PLACE. WHITE BLINKING PSN LGT WITH VISUAL RANGE OF AT LEAST 3KM. FOR INFO ON ACT AND HEL EMERG MEDICAL SER (HEMS) CTC TEL +41 79 772 93 32 / +41 79 596 93 33.
! W2230/25	0000 - 2359	GND	3050m / 10000ft	462518N 0074947E	4.0KM / 2.2NM	TEMPO R-AREA ESTABLISHED AT BLATTEN 462325N0074936E 462449N0075219E 462513N0075254E 462554N0075247E 462630N0075220E 462714N0075031E 462658N0074941E 462551N0074721E 462512N0074640E 462335N0074852E 462325N0074936E (462518N0074947E RADIUS 2.2NM). DUE TO LANDSLIDE. ENTRY PROHIBITED FOR CIVIL AIRCRAFT EXC HEL EMERG MEDICAL SER (HEMS), SEARCH AND RESCUE (SAR), SUPPORT AND ESSENTIAL LOGISTIC FLIGHTS AS DEFINED BY FOCA.
! W2271/25	2100 - 2359	GND	FL100	464845N 0065639E	0.6KM / 0.4NM	TEMPO D-AREA PAYERNE ESTABLISHED 4.1KM SSE PAYERNE AD, RADIUS 0.6KM (464845N0065639E RADIUS 0.4NM). WX MEASUREMENTS BY REMOTELY PILOTED AERIAL SYSTEM WILL TAKE PLACE. WHITE BLINKING PSN LGT WITH VISUAL RANGE OF AT LEAST 3KM. FOR INFO ON ACT AND HEL EMERG MEDICAL SER (HEMS) CTC TEL +41 79 772 93 32 OR TEL +41 79 596 93 33
! W2299/25	2000 - 2359	GND	FL100	463539N 0070537E	0.3KM / 0.2NM	TEMPO D-AREA GRUYERES ESTABLISHED, RADIUS 0.2KM (463539N0070537E RADIUS 0.2NM). WX MEASUREMENTS BY REMOTELY PILOTED AERIAL SYSTEM WILL TAKE PLACE. WHITE BLINKING PSN LGT WITH VISUAL RANGE OF AT LEAST 3KM. FOR INFO ON ACT AND HEL EMERG MEDICAL SER (HEMS) CTC TEL +41 79 772 93 32 / +41 79 596 93 33.



Firing-Nr AIP-Area NOTAM-Nr	Validity UTC	Lower Limit (m/ft AMSL or FL)	Upper Limit (m/ft AMSL or FL)	Center Point	Covering Radius	NOTAM Item E
! W2313/25	2200 - 2359	GND	FL090	471416N 0083051E	0.3KM / 0.2NM	TEMPO D-AREA HAUSEN AM ALBIS ESTABLISHED, RADIUS 0.2KM (471416N0083051E RADIUS 0.2NM). WX MEASUREMENTS BY REMOTELY PILOTED AERIAL SYSTEM WILL TAKE PLACE. WHITE BLINKING PSN LGT WITH VISUAL RANGE OF AT LEAST 3KM. FOR INFO ON ACT AND HEL EMERG MEDICAL SER (HEMS) CTC TEL +41 79 772 93 32 / +41 79 596 93 33.

Activities not shown on the DABS Chart Side:

NOTAM-Nr	Validity UTC	Lower Limit (m/ft AMSL or FL)	Upper Limit (m/ft AMSL or FL)	Center Point	Covering Radius	NOTAM Item E
W1663/25	0000 - 2359	GND	2450m / 8000ft	463009N 0085918E	0.6KM / 0.3NM	5 KM SE OLIVONE ADVISED NOT TO FLY BLW 8000 FT AMSL WI RADIUS 0.5 KM (463009N0085918E RADIUS 0.3 NM) DUE TO NESTING OF BIRDS OF PREY.
W1664/25	0000 - 2359	GND	2450m / 8000ft	463007N 0085843E	0.6KM / 0.3NM	4.5 KM SE OLIVONE ADVISED NOT TO FLY BLW 8000 FT AMSL WI RADIUS 0.5 KM (463007N0085843E RADIUS 0.3 NM) DUE TO NESTING OF BIRDS OF PREY.
W1665/25	0000 - 2359	GND	2450m / 8000ft	462819N 0085820E	0.6KM / 0.3NM	7 KM SSE OLIVONE ADVISED NOT TO FLY BLW 8000 FT AMSL WI RADIUS 0.5 KM (462819N0085820E RADIUS 0.3 NM) DUE TO NESTING OF BIRDS OF PREY.
W2151/25	0800 - 1500	GND	FL100	463306N 0072252E	9.3KM / 5.1NM	INTENSE GLD ACT WILL TAKE PLACE IN VCY OF ZWEISIMMEN AD, RADIUS 9.3KM (463306N0072252E RADIUS 5.0NM).

For detailed information regarding the DABS see AIP Switzerland GEN 3.1-5 or VFR GEN 1-0-4.  
! New or changed data regarding an earlier version of the DABS.