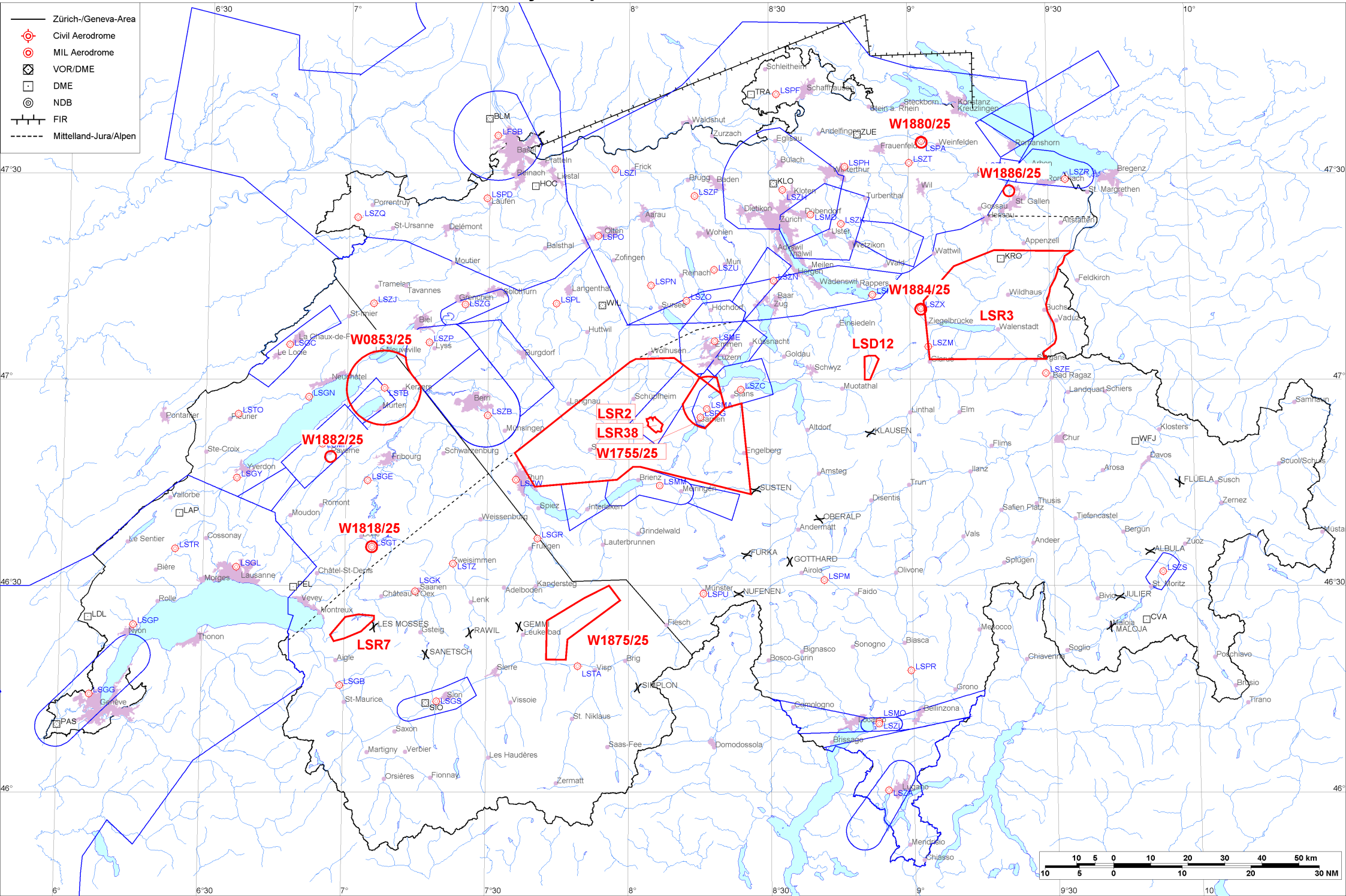


- Zürich-/Geneva-Area
- ⊕ Civil Aerodrome
- ⊙ MIL Aerodrome
- ⊠ VOR/DME
- DME
- ⊙ NDB
- FIR
- - - - - Mittelland-Jura/Alpen





Firings / AIP-Areas / Warnings:

Firing-Nr AIP-Area NOTAM-Nr	Validity UTC	Lower Limit (m/ft AMSL or FL)	Upper Limit (m/ft AMSL or FL)	Center Point	Covering Radius	NOTAM Item E
LSD12 W2440/24	0600 - 1000 1100 - 2100	GND	1800m / 5900ft	470140N 0085126E	3.6KM / 2.0NM	D-AREA LSD12 SIHLTAL ACT.
LSR2 W1842/25	1140 - 1220 1350 - 1430	FL100	FL130	464812N 0080120E	32.6KM / 17.6NM	R-AREA LSR2 HOHGANT ACT.
LSR3 W1843/25	1145 - 1225	FL100	FL130	471047N 0091932E	24.4KM / 13.2NM	R-AREA LSR3 SPEER ACT.
LSR7 W1675/25	0800 - 2100	GND	4700m / 15500ft	462408N 0070145E	6.5KM / 3.5NM	R-AREA LSR7 HONGRIN ACT DUE TO FRNG.
LSR38 W1845/25	0730 - 2030	GND	5350m / 17500ft	465317N 0080519E	2.6KM / 1.4NM	R-AREA LSR38 GLAUBENBERG-WASSERFALLEN ACT DUE TO FRNG.
W0853/25	0800 - 0900	GND	FL120	465846N 0070746E	10.1KM / 5.5NM	TEMPO R-AREA BELLECHASSE ESTABLISHED DUE TO AIR DISPLAY RADIUS 10KM (465846N0070746E RADIUS 5.4NM), LSZB TMA1 EXCLUDED. ENTRY PROHIBITED WHEN ACT, EXC HEL EMERG MEDICAL SER (HEMS). FOR INFO ON ACT CTC PAYERNE TWR 128.675. HEMS CTC 130.800 FOR COOR.
W1755/25	0745 - 0825 1245 - 1325	GND	2450m / 8000ft	465636N 0081700E	7.1KM / 3.8NM	TEMPO R-AREA ALPNACH ACT DUE TO AIR DISPLAY 470006N0081457E CLOCKWISE ALONG ARC OF CIRCLE RADIUS 3.8NM CENTERED 465636N0081700E TO 470012N0081843E 465546N0082028E 465252N0081610E 465252N0081610E CLOCKWISE ALONG ARC OF CIRCLE RADIUS 3.8NM CENTERED 465636N0081700E TO 465621N0081130E 470006N0081457E (465636N0081700E RADIUS 3.8NM). EXCLUDING AREAS DELIMITED BY TMA EMMEN AND CTR BUOCHS AND AREA SE OF CTR ALPNACH. ENTRY PROHIBITED WHEN ACT EXC HEMS (HEL EMERG MEDICAL SER). FOR INFO ON ACT CTC ALPNACH TWR 128.475, HEMS CTC 130.800 FOR COOR.
W1818/25	2000 - 2359	GND	FL100	463539N 0070537E	0.3KM / 0.2NM	TEMPO D-AREA GRUYERES ESTABLISHED, RADIUS 0.2KM (463539N0070537E RADIUS 0.2NM). WX MEASUREMENTS BY REMOTELY PILOTED AERIAL SYSTEM WILL TAKE PLACE. WHITE BLINKING PSN LGT WITH VISUAL RANGE OF AT LEAST 3KM. FOR INFO ON ACT AND HEL EMERG MEDICAL SER (HEMS) CTC TEL +41 79 772 93 32 / +41 79 596 93 33.
W1875/25	0000 - 2359	GND	3050m / 10000ft	462437N 0074914E	13.1KM / 7.1NM	TEMPO R-AREA ESTABLISHED AT BLATTEN 462453N0074247E 462807N0075032E 462959N0075551E 462751N0075812E 462210N0074710E 461911N0074649E 461914N0074238E 462453N0074247E (462437N0074914E RADIUS 7.1NM). DUE TO LANDSLIDE. ENTRY PROHIBITED FOR CIVIL AIRCRAFT EXC HEL EMERG MEDICAL SER (HEMS), SEARCH AND RESCUE (SAR), SUPPORT AND ESSENTIAL LOGISTIC FLIGHTS AS DEFINED BY FOCA.
! W1880/25	2130 - 2359	GND	FL195	473426N 0090252E	0.3KM / 0.2NM	TEMPO R-AREA AMLIKON ESTABLISHED RADIUS 0.2KM (473426N0090252E RADIUS 0.2NM), WX MEASUREMENTS BY REMOTELY PILOTED AERIAL SYSTEM WILL TAKE PLACE. WHITE BLINKING PSN LGT WITH VISUAL RANGE OF AT LEAST 3KM. ENTRY PROHIBITED WHEN ACT EXC HEL EMERG MEDICAL SER (HEMS). FOR INFO ON ACT AND HEMS CTC TEL +41 79 772 93 32 / +41 79 596 93 33.



Firing-Nr AIP-Area NOTAM-Nr	Validity UTC	Lower Limit (m/ft AMSL or FL)	Upper Limit (m/ft AMSL or FL)	Center Point	Covering Radius	NOTAM Item E
! W1882/25	2100 - 2359	GND	FL100	464845N 0065639E	0.6KM / 0.4NM	TEMPO D-AREA PAYERNE ESTABLISHED 4.1KM SSE PAYERNE AD, RADIUS 0.6KM (464845N0065639E RADIUS 0.4NM). WX MEASUREMENTS BY REMOTELY PILOTED AERIAL SYSTEM WILL TAKE PLACE. WHITE BLINKING PSN LGT WITH VISUAL RANGE OF AT LEAST 3KM. FOR INFO ON ACT AND HEL EMERG MEDICAL SER (HEMS) CTC TEL +41 79 772 93 32 / +41 79 596 93 33.
! W1884/25	2000 - 2359	GND	3400m / 11200ft	471010N 0090224E	0.6KM / 0.4NM	TEMPO D-AREA SCHANIS ESTABLISHED RADIUS 0.6KM (471010N0090224E RADIUS 0.4NM). WX MEASUREMENTS BY REMOTELY PILOTED AERIAL SYSTEM WILL TAKE PLACE. WHITE BLINKING POSITION LGT WITH VISUAL RANGE OF AT LEAST 3KM. FOR INFO ON ACT AND HEL EMERG MEDICAL SER (HEMS) CTC TEL +41 79 772 93 32 / TEL +41 79 596 93 33.
! W1886/25	2000 - 2359	GND	1200m / 4000ft	472723N 0092137E	0.3KM / 0.2NM	TEMPO D-AREA WITTENBACH ESTABLISHED 2.3KM WSW WITTENBACH, RADIUS 0.2KM (472723N0092137E RADIUS 0.2NM). WI AIRSPACE GOLF ONLY. WX MEASUREMENTS BY REMOTELY PILOTED AERIAL SYSTEM WILL TAKE PLACE. WHITE BLINKING PSN LGT WITH VISUAL RANGE OF AT LEAST 3KM. FOR INFO ON ACT AND HEL EMERG MEDICAL SER (HEMS) CTC TEL +41 79 772 93 32 / +41 79 596 93 33.

Activities not shown on the DABS Chart Side:

NOTAM-Nr	Validity UTC	Lower Limit (m/ft AMSL or FL)	Upper Limit (m/ft AMSL or FL)	Center Point	Covering Radius	NOTAM Item E
W1663/25	0000 - 2359	GND	2450m / 8000ft	463009N 0085918E	0.6KM / 0.3NM	5 KM SE OLIVONE ADVISED NOT TO FLY BLW 8000 FT AMSL WI RADIUS 0.5 KM (463009N0085918E RADIUS 0.3 NM) DUE TO NESTING OF BIRDS OF PREY.
W1664/25	0000 - 2359	GND	2450m / 8000ft	463007N 0085843E	0.6KM / 0.3NM	4.5 KM SE OLIVONE ADVISED NOT TO FLY BLW 8000 FT AMSL WI RADIUS 0.5 KM (463007N0085843E RADIUS 0.3 NM) DUE TO NESTING OF BIRDS OF PREY.
W1665/25	0000 - 2359	GND	2450m / 8000ft	462819N 0085820E	0.6KM / 0.3NM	7 KM SSE OLIVONE ADVISED NOT TO FLY BLW 8000 FT AMSL WI RADIUS 0.5 KM (462819N0085820E RADIUS 0.3 NM) DUE TO NESTING OF BIRDS OF PREY.

For detailed information regarding the DABS see AIP Switzerland GEN 3.1-5 or VFR GEN 1-0-4.

! New or changed data regarding an earlier version of the DABS.